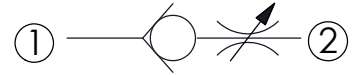
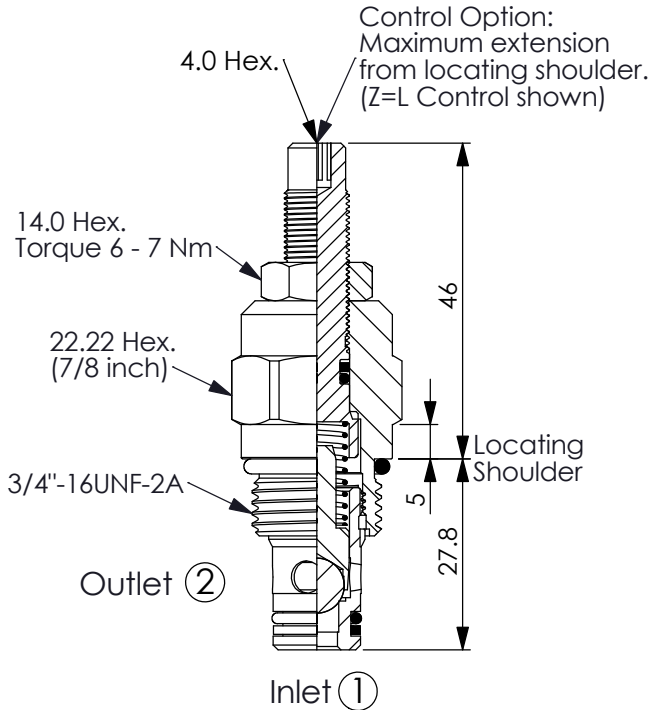


Ordering Code: **CV-08W-X-Y-Z**



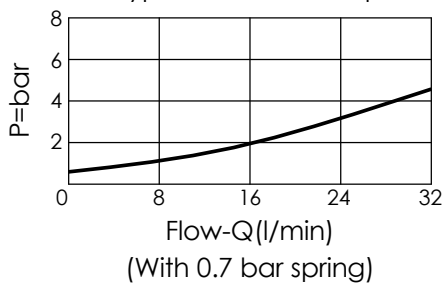
TECHNICAL DATA

Max. pressure:	240	bar
Rated flow:	30	l/min
Cavity-Tooling:	08W-2	
Installation torque:	28 - 35	Nm
Weight:	0.11 (Z=L)	kg

UNIT:mm

Illustrations / detail are for reference only. Data subject to change.

Typical Pressure Drop



X OPERATION

20 ① to ② (Free Flow)

Y

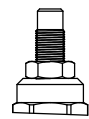
SPRINGS

Cracking pressure

03	0.3 bar
07	0.7 bar
17	1.7 bar
41	4.1 bar
69	6.9 bar
103	10.3 bar
138	13.8 bar
176	17.6 bar

Z OPTIONS

L Leakproof hex. socket screw.



E Handknob and locknut.

