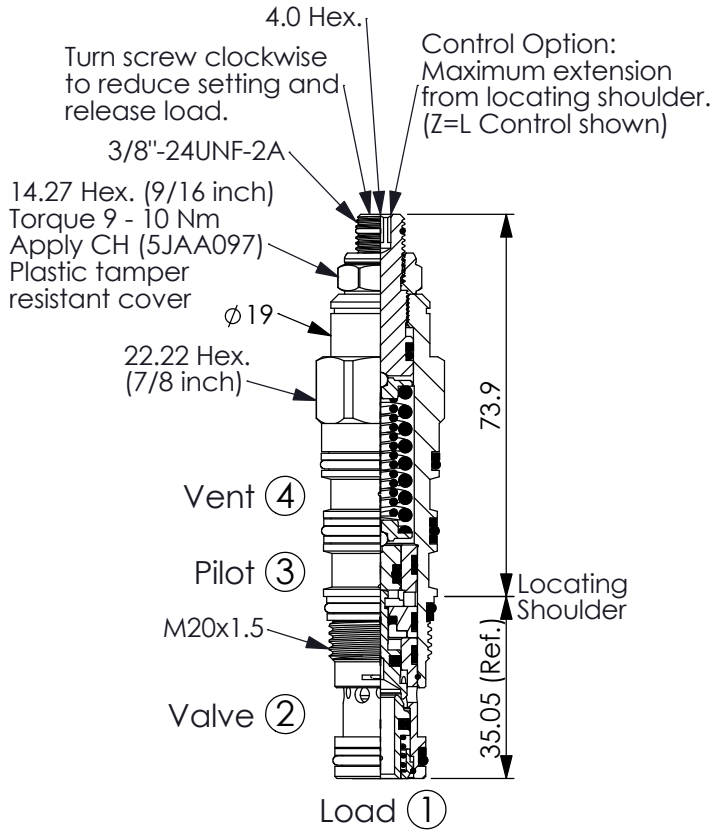


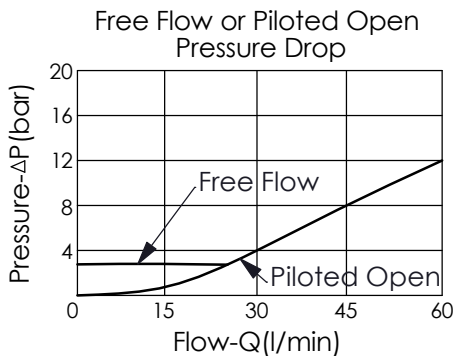
## COUNTERBALANCE VALVE (Vented, 420 Bar Maximum Setting)

Ordering Code: **CW-21A-X-Y-Z**



UNIT:mm

Illustrations / detail are for reference only. Data subject to change.



**Y**

### SPRINGS

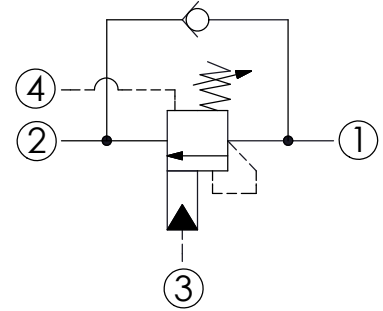
ADJUSTMENT RANGES(2.8 bar Cracking Pressure)

**F**

70 - 175 bar (140 bar Standard Setting)

**G**

140 - 420 bar (280 bar Standard Setting)



### TECHNICAL DATA

Max. Setting:	420	bar
Rated flow:	60	l/min
Cavity-Tooling:	21A-4	
Installation torque:	40 - 50	Nm
Weight:	0.19	kg

### Pressure Setting:

Setting should be 1.3 times maximum load induced pressure.  
(We suggest when the Max. setting pressure is 420 bar, the load pressure has to be lower than 320 bar.)



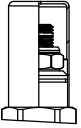
**X**

### PILOT RATIO

<b>4B</b>	2 : 1 (with sealed pilot)
<b>4E</b>	5 : 1 (with sealed pilot)
<b>4J</b>	10 : 1 (with sealed pilot)

**Z**

### OPTIONS

<b>L</b>	Leakproof hex. socket screw.	
<b>LP</b>	Leakproof hex. socket screw. With Stainless Steel External Components	
<b>C</b>	Stainless Steel Tamper Resistant Cover.	
<b>CB</b>	Plastic Tamper Resistant Cover (Order Code:5JAA093)	