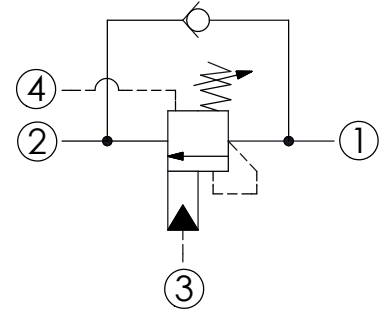
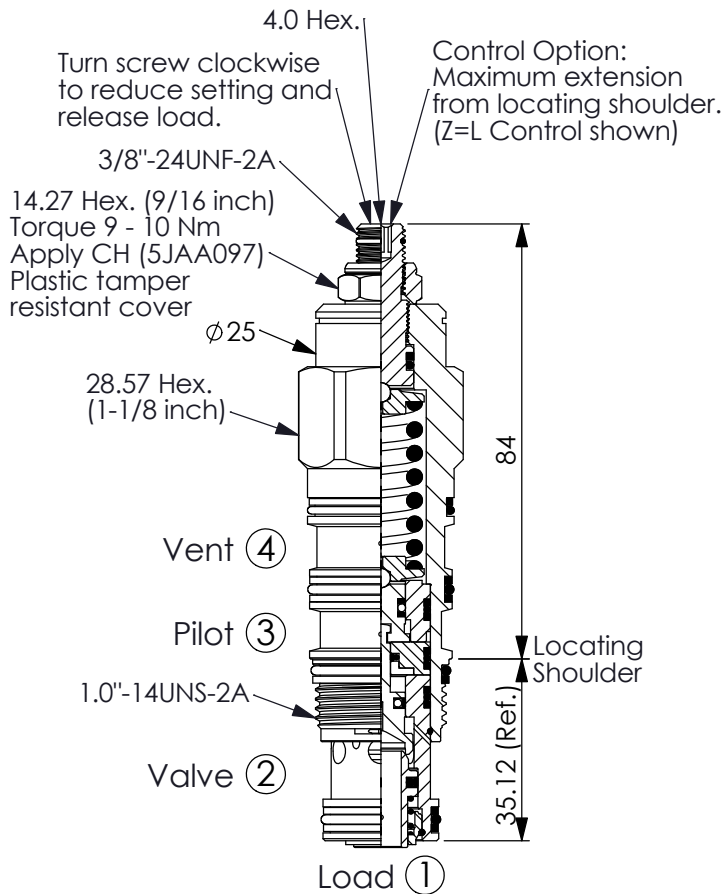


COUNTERBALANCE VALVE (Vented, 420 Bar Maximum Setting)

Ordering Code: **CW-22A-X-Y-Z**

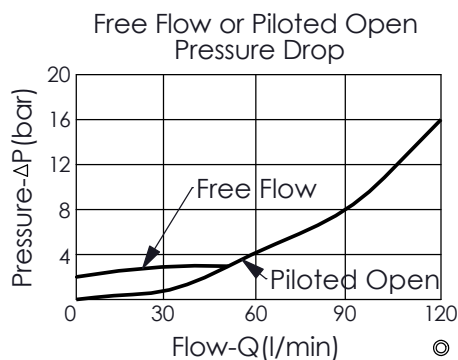


TECHNICAL DATA

Max. Setting:	420	bar
Rated flow:	120	l/min
Cavity-Tooling:	22A-4	
Installation torque:	60 - 70	Nm
Weight:	0.36	kg

Pressure Setting:

Setting should be 1.3 times maximum load induced pressure.
(We suggest when the Max. setting pressure is 420 bar, the load pressure has to be lower than 320 bar.)



X PILOT RATIO

4B	2 : 1 (with sealed pilot)
4E	5 : 1 (with sealed pilot)

Z OPTIONS

L	Leakproof hex. socket screw.	
LP	Leakproof hex. socket screw. With Stainless Steel External Components	
C	Stainless Steel Tamper Resistant Cover.	
CB	Plastic Tamper Resistant Cover (Order Code:5JAA098)	

Y SPRINGS

ADJUSTMENT RANGES (1.7 bar Cracking Pressure)

F	70 - 175 bar (140 bar Standard Setting)
G	140 - 420 bar (280 bar Standard Setting)