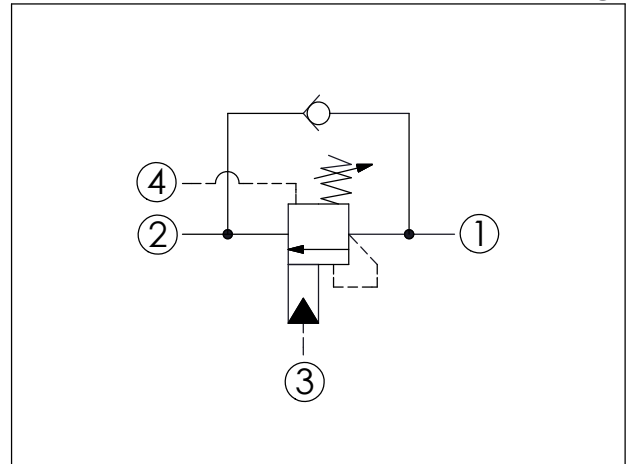
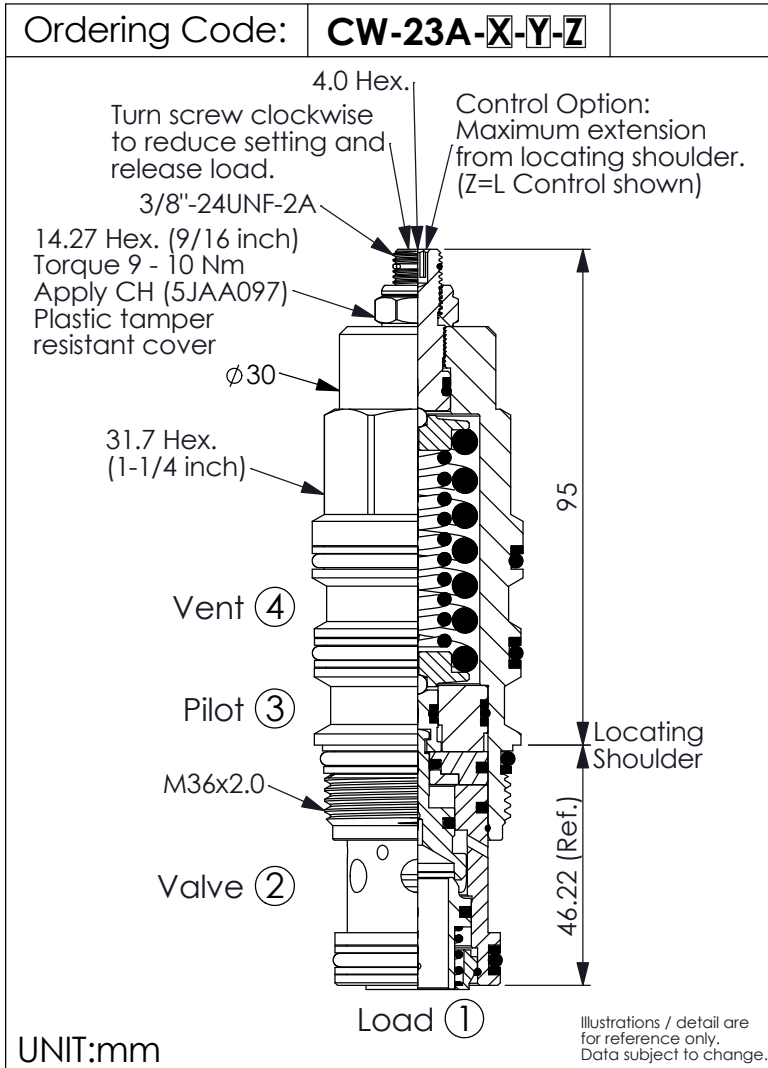
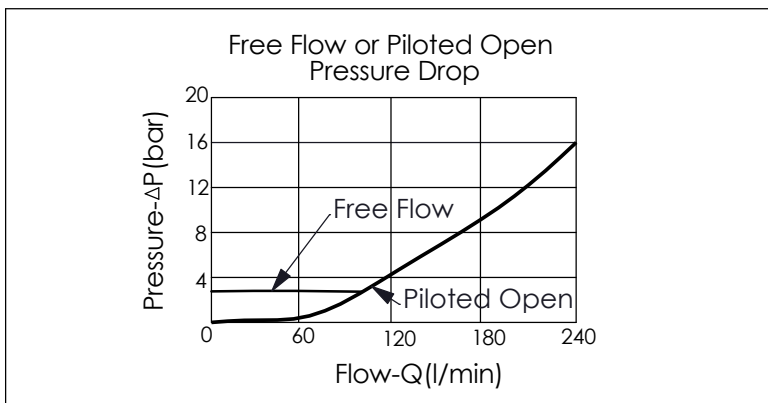


## COUNTERBALANCE VALVE (Vented, 420 Bar Maximum Setting)



TECHNICAL DATA		
Max. Setting:	420	bar
Rated flow:	240	l/min
Cavity-Tooling:	23A-4	
Installation torque:	200 - 215	Nm
Weight:	0.73	kg
<b>Pressure Setting:</b> Setting should be 1.3 times maximum load induced pressure. (We suggest when the Max. setting pressure is 420 bar, the load pressure has to be lower than 320 bar.)		



X	PILOT RATIO	
4B	2 : 1 (with sealed pilot)	
4E	5 : 1 (with sealed pilot)	

Y	SPRINGS	
	ADJUSTMENT RANGES(1.7 bar Cracking Pressure)	
F	70 - 175 bar (140 bar Standard Setting)	
G	140 - 420 bar (280 bar Standard Setting)	

Z	OPTIONS	
L	Leakproof hex. socket screw.	
C	Stainless Steel Tamper Resistant Cover.	
CH	Plastic Tamper Resistant Cover of General Type Hex. Nut (Order Code:5JAA097)	