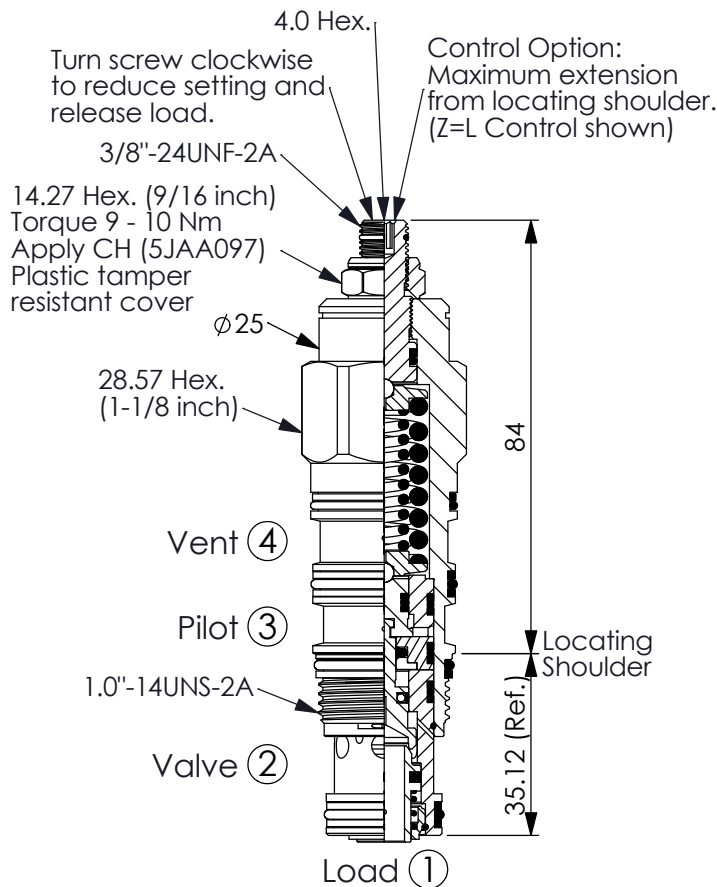


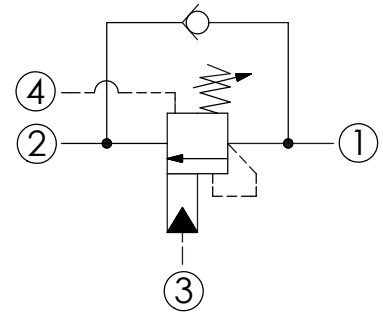
COUNTERBALANCE VALVE (Vented, 280 Bar Maximum Setting)

Ordering Code: **CW-22A-X-Y-Z**



UNIT:mm

Illustrations / detail are for reference only. Data subject to change.

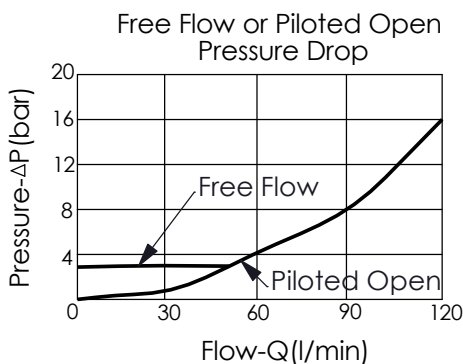


TECHNICAL DATA

Max. Setting:	280	bar
Rated flow:	120	l/min
Cavity-Tooling:	22A-4	
Installation torque:	60 - 70	Nm
Weight:	0.36	kg

Pressure Setting:

Setting should be 1.3 times maximum load induced pressure. (We suggest when the Max. setting pressure is 280 bar, the load pressure has to be lower than 215 bar.)



X PILOT RATIO

4A	1 : 1 (with sealed pilot)
4C	3 : 1 (with sealed pilot)

Y

SPRINGS

ADJUSTMENT RANGES(1.7 bar Cracking Pressure)

H

70 - 280 bar (210 bar Standard Setting)

I

28 - 105 bar (70 bar Standard Setting)

Z

OPTIONS

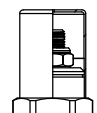
L

Leakproof hex. socket screw.



C

Stainless Steel Tamper Resistant Cover.



CB

Plastic Tamper Resistant Cover (Order Code:5JAA098)

