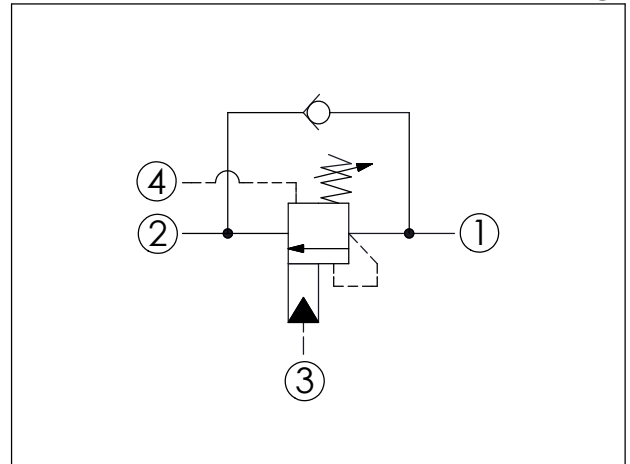
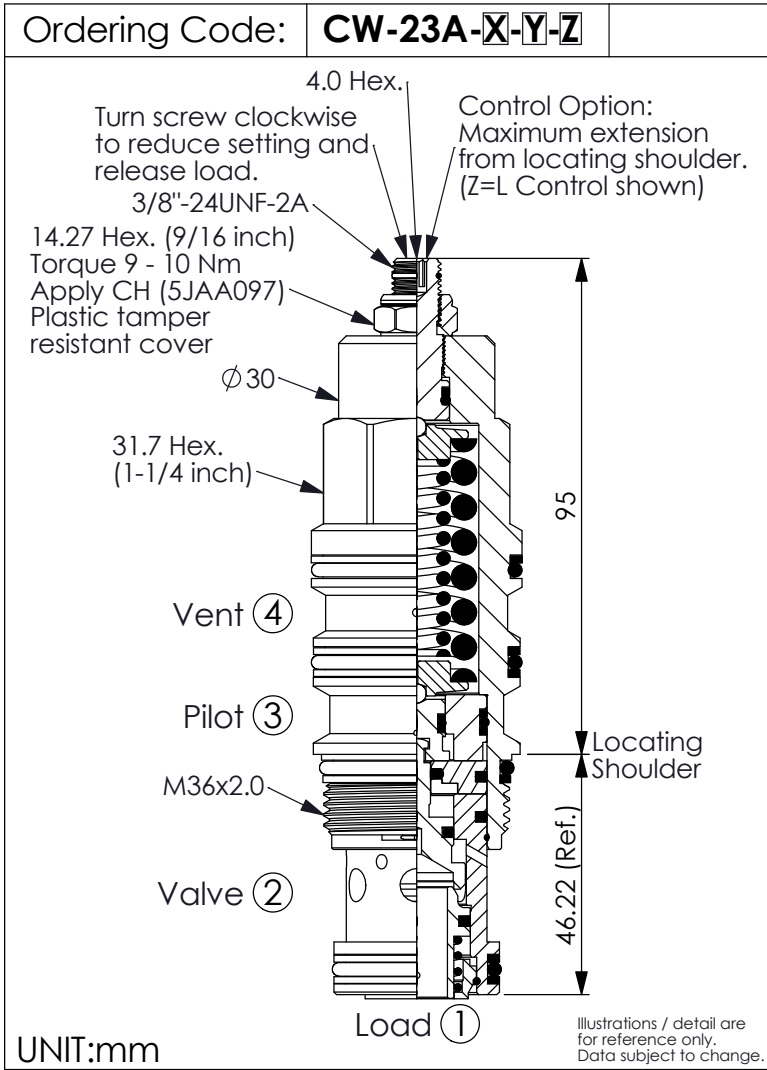
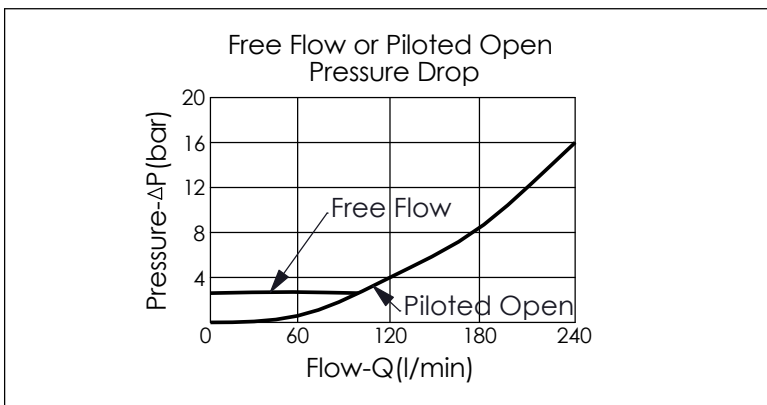


COUNTERBALANCE VALVE (Vented, 280 Bar Maximum Setting)



TECHNICAL DATA		
Max. Setting:	280	bar
Rated flow:	240	l/min
Cavity-Tooling:	23A-4	
Installation torque:	200 - 215	Nm
Weight:	0.72	kg
Pressure Setting: Setting should be 1.3 times maximum load induced pressure. (We suggest when the Max. setting pressure is 280 bar, the load pressure has to be lower than 215 bar.)		



X	PILOT RATIO	
4A	1 : 1 (with sealed pilot)	
4C	3 : 1 (with sealed pilot)	

Y	SPRINGS	
	ADJUSTMENT RANGES(1.7 bar Cracking Pressure)	
H	70 - 280 bar (210 bar Standard Setting)	
I	28 - 105 bar (70 bar Standard Setting)	

Z	OPTIONS	
L	Leakproof hex. socket screw.	
C	Stainless Steel Tamper Resistant Cover.	
CH	Plastic Tamper Resistant Cover of General Type Hex. Nut (Order Code:5JAA097)	