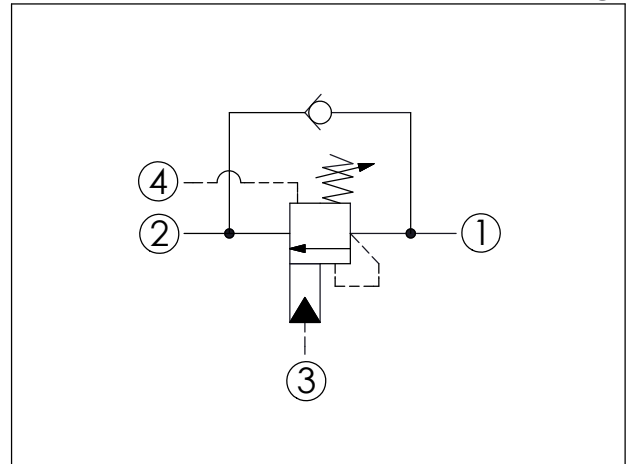
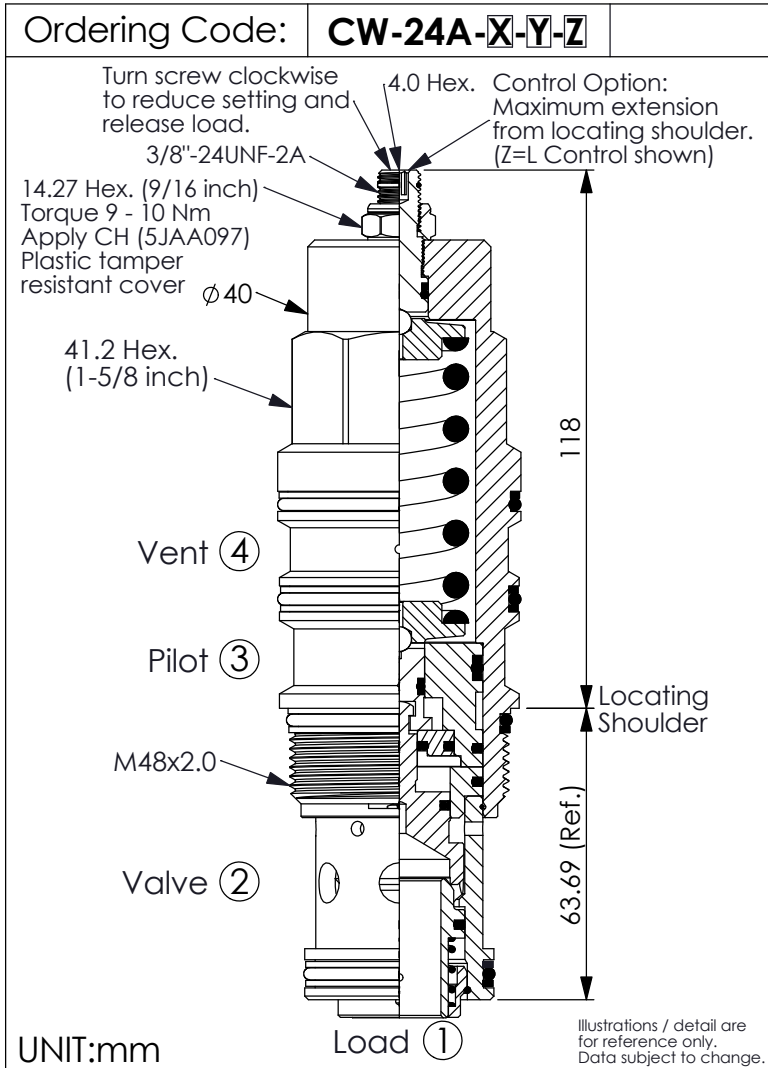


COUNTERBALANCE VALVE (Vented, 280 Bar Maximum Setting)

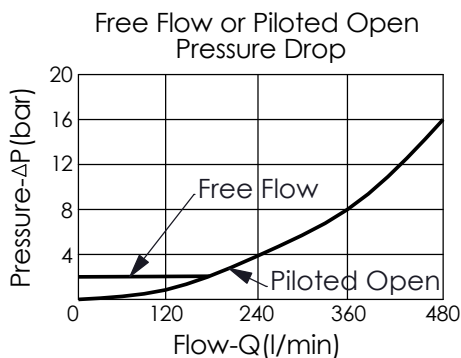


TECHNICAL DATA

Max. Setting:	280	bar
Rated flow:	480	l/min
Cavity-Tooling:	24A-4 (24AB-4)	
Installation torque:	465 - 500	Nm
Weight:	1.59	kg

Pressure Setting:

Setting should be 1.3 times maximum load induced pressure.
(We suggest when the Max. setting pressure is 280 bar, the load pressure has to be lower than 215 bar.)



X PILOT RATIO

4A	1 : 1 (with sealed pilot)
4C	3 : 1 (with sealed pilot)

Y SPRINGS

ADJUSTMENT RANGES (1.5 bar Cracking Pressure)

H	70 - 280 bar (210 bar Standard Setting)
I	28 - 105 bar (70 bar Standard Setting)

Z OPTIONS

L	Leakproof hex. socket screw.	
C	Stainless Steel Tamper Resistant Cover.	
CH	Plastic Tamper Resistant Cover of General Type Hex. Nut (Order Code:5JAA097)	