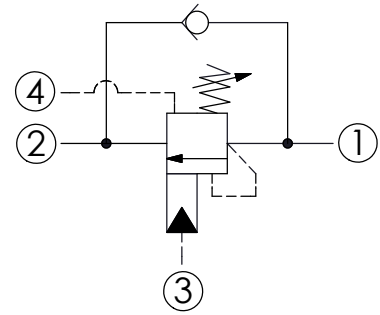
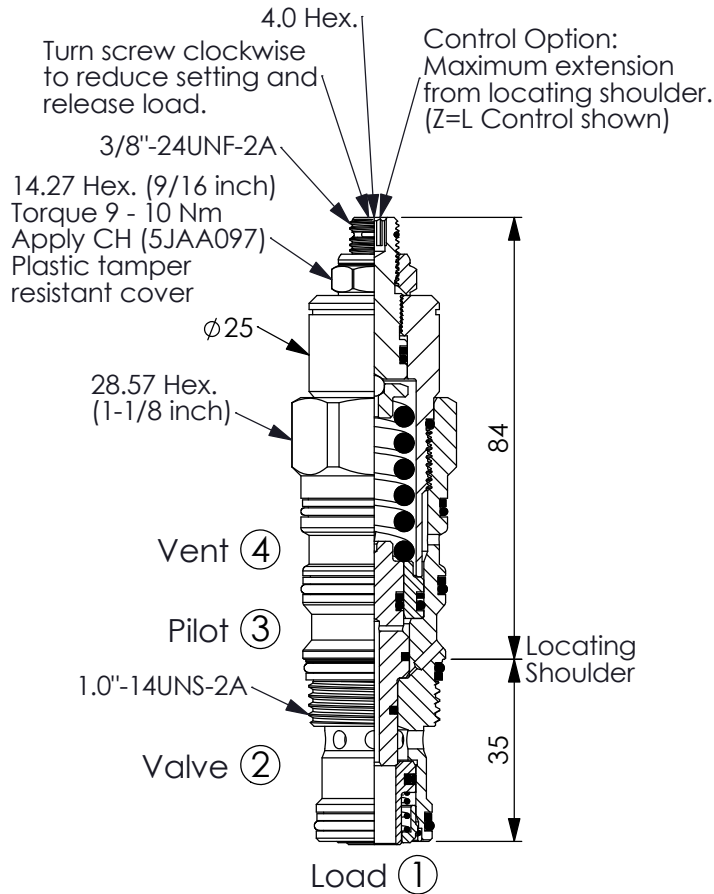


COUNTERBALANCE VALVE (Vented, 350 Bar Maximum Setting)

Ordering Code: **CWA-22A-X-Y-Z**

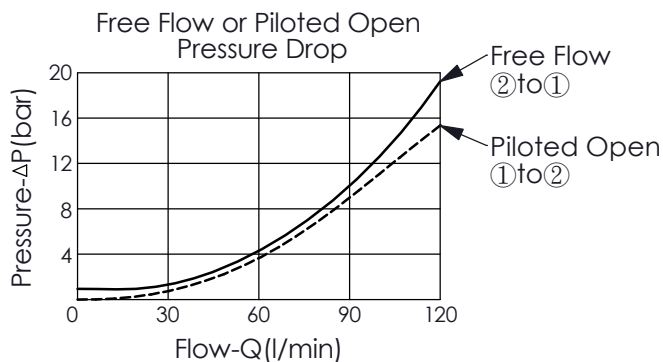


TECHNICAL DATA

Max. Setting:	350	bar
Rated flow:	120	l/min
Cavity-Tooling:	22A-4	
Installation torque:	60 - 70	Nm
Weight:	0.37	kg

Pressure Setting:

Setting should be 1.3 times maximum load induced pressure. (We suggest when the Max. setting pressure is 350 bar, the load pressure has to be lower than 270 bar.)




X PILOT RATIO

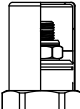
4D 4 : 1 (with sealed pilot)

· Maximum Leakage Approximately (0.7 cc/min./70 bar)

Z OPTIONS

L Leakproof hex. socket screw. 

CB Plastic Tamper Resistant Cover (Order Code:5JAA098) 

C Stainless Steel Tamper Resistant Cover. 

Y	SPRINGS	
	ADJUSTMENT RANGES(1.7 bar Cracking Pressure)	
W	140 - 350 bar (210 bar Standard Setting)	