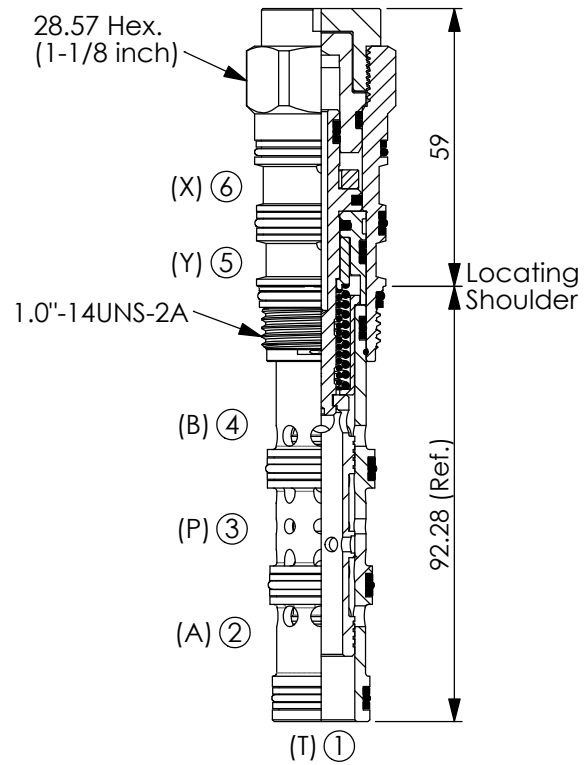


DIRECTIONAL VALVE (4-Way, 2-Position Spool, Pilot-to-shift)

Ordering Code: **DC-62A-X-Y-Z**



28.57 Hex. (1-1/8 inch)

(X) ⑥

(Y) ⑤

1.0"-14UNS-2A

(B) ④

(P) ③

(A) ②

(T) ①

59

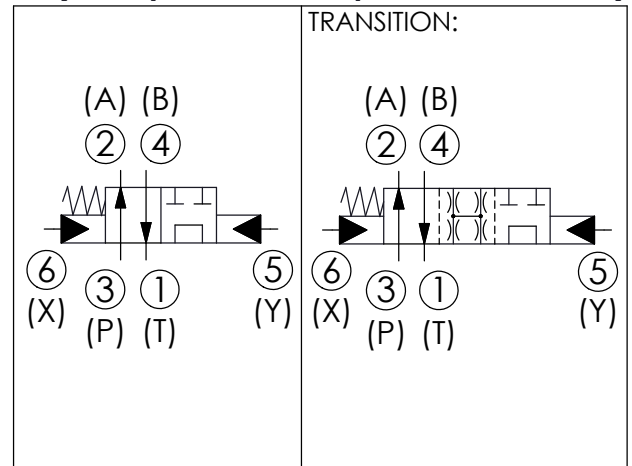
92.28 (Ref.)

59

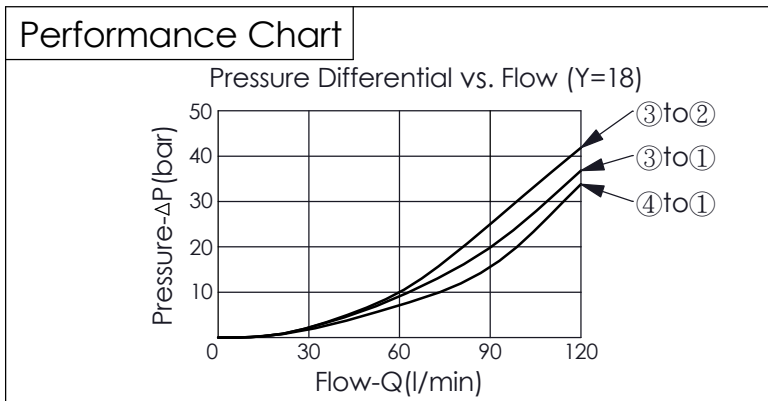
Locating Shoulder

UNIT:mm

Illustrations / detail are for reference only. Data subject to change.



TECHNICAL DATA		
Max. pressure:	350	bar
Rated flow:	38 - 120	l/min (Refer To Performance Chart)
Cavity-Tooling:	62A-6	
Installation torque:	60 - 70	Nm
Weight:	0.38	kg
<ul style="list-style-type: none"> • Minimum Pilot Pressure Required to Shift Valve : 10.5 bar. • Maximum Leakage Approximately (30 cc/min./70 bar) • All ports will accept 350 bar. 		



X	OPERATION	
6E	Pilot-to-shift	

Y	SPOOL CONFIGURATION	
18	Spool 4-Way, 2-Position, Tandem Centre	

Z	OPTIONS	
N	Non-adjustable	