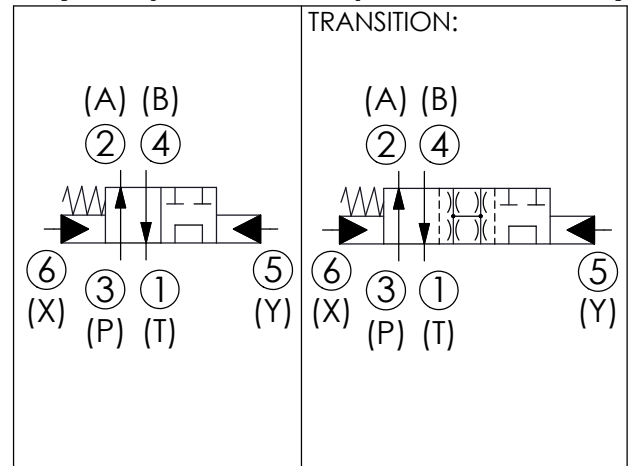
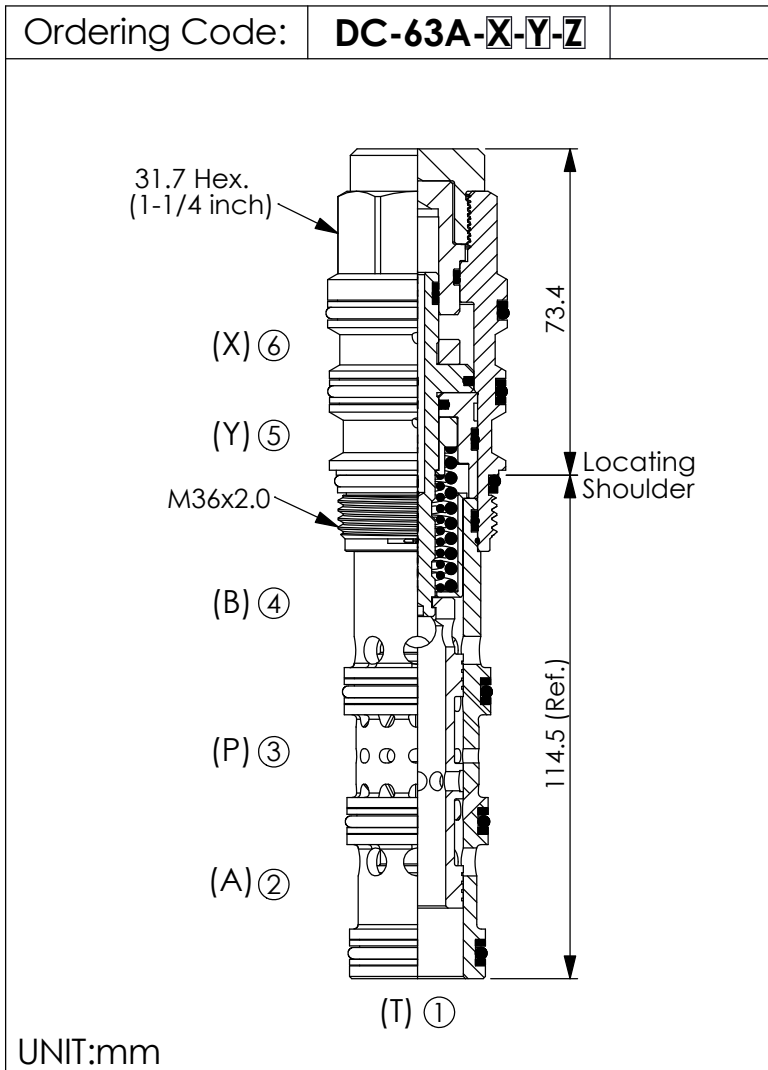
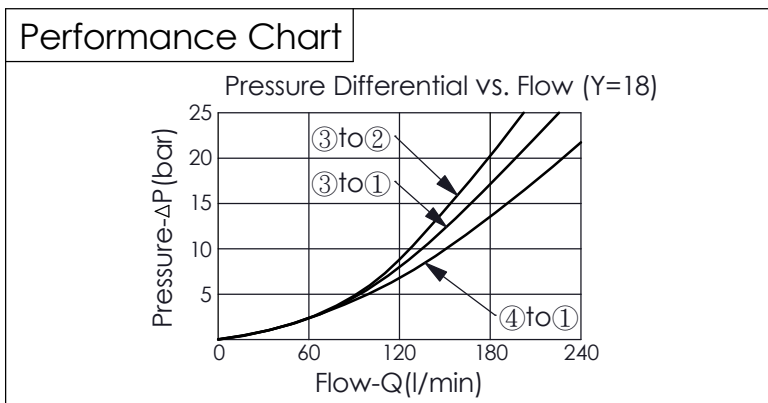


DIRECTIONAL VALVE (4-Way, 2-Position Spool, Pilot-to-shift)



TECHNICAL DATA	
Max. pressure:	350 bar
Rated flow:	95-380 l/min (Refer To Performance Chart)
Cavity-Tooling:	63A-6
Installation torque:	200-215 Nm
Weight:	0.85 kg
<ul style="list-style-type: none"> Minimum Pilot Pressure Required to Shift Valve : 9 bar. Maximum Leakage Approximately (30 cc/min./70 bar) All ports will accept 350 bar. 	



X	OPERATION
6E	Pilot-to-shift

Y	SPOOL CONFIGURATION
18	Spool 4-Way, 2-Position, Tandem Centre

Z	OPTIONS
N	Non-adjustable