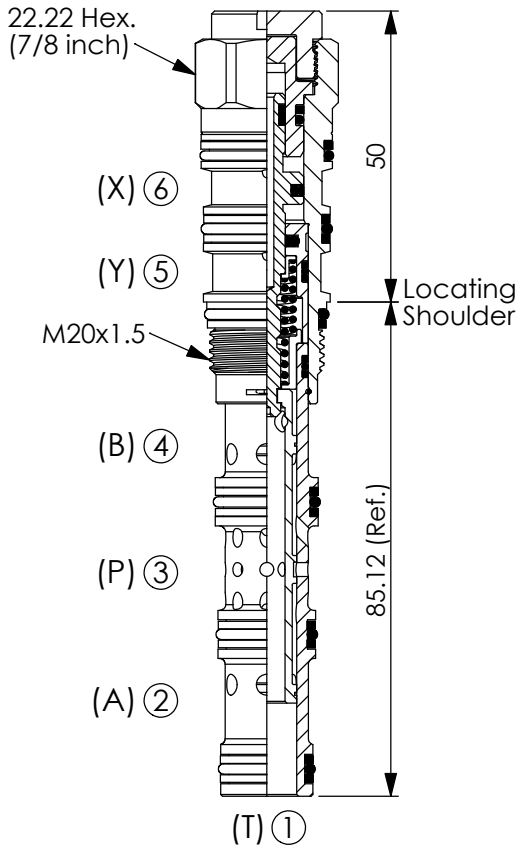
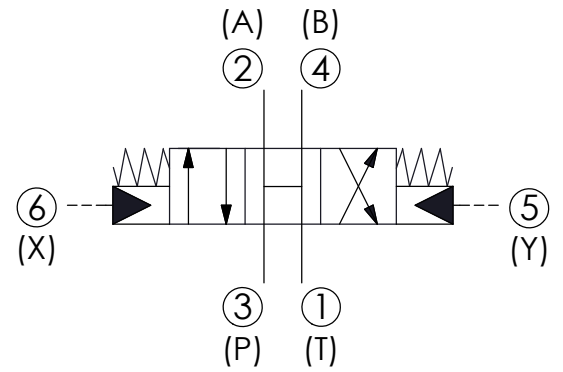


DIRECTIONAL VALVE (4-Way, 3-Position Spool, Pilot-to-shift)

Ordering Code: **DC-61A-X-Y-Z**



UNIT:mm

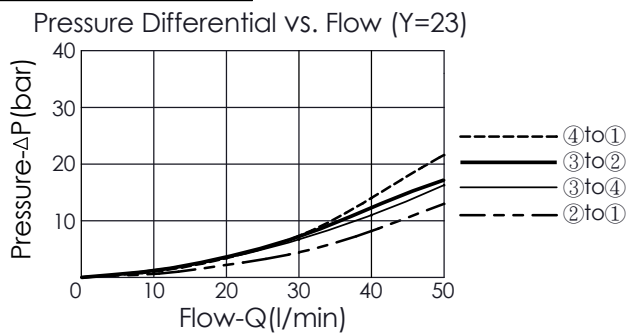


TECHNICAL DATA

Max. pressure:	350	bar
Rated flow:	28-40	l/min (Refer To Performance Chart)
Cavity-Tooling:	61A-6	
Installation torque:	40-50	Nm
Weight:	0.200	kg

- Minimum Pilot Pressure Required to Shift Valve : 12 bar.
- Maximum Leakage Approximately (30 cc/min./70 bar)
- All ports will accept 350 bar.

Performance Chart



X OPERATION

6E Pilot-to-shift

Y SPOOL CONFIGURATION

23 Spool 4-Way, 3-Position, Open Centre

Z OPTIONS

N Non-adjustable