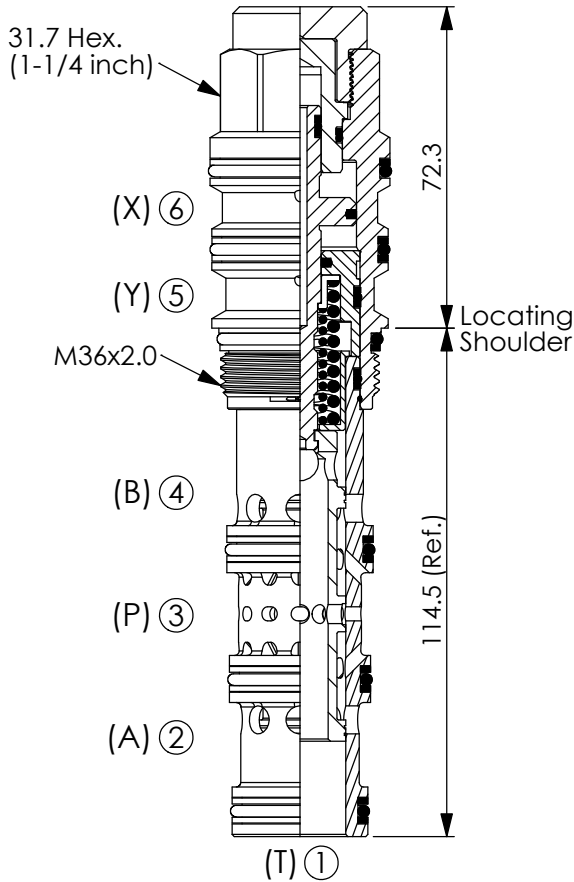
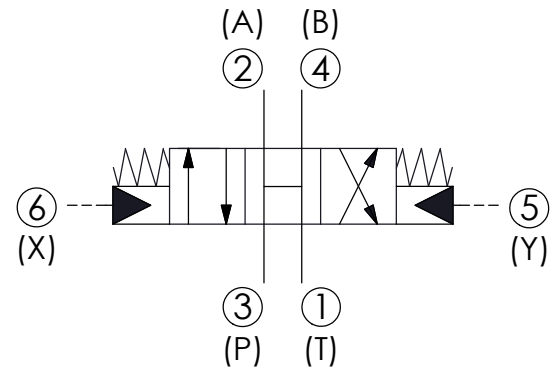


## DIRECTIONAL VALVE (4-Way, 3-Position Spool, Pilot-to-shift)

Ordering Code: **DC-63A-X-Y-Z**



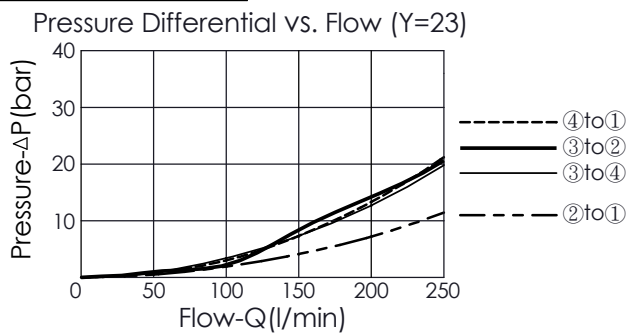
UNIT:mm



### TECHNICAL DATA

Max. pressure:	350	bar
Rated flow:	95-380	l/min (Refer To Performance Chart)
Cavity-Tooling:	63A-6	
Installation torque:	200-215	Nm
Weight:	0.824	kg
<ul style="list-style-type: none"> <li>• Minimum Pilot Pressure Required to Shift Valve : 9 bar.</li> <li>• Maximum Leakage Approximately (30 cc/min./70 bar)</li> <li>• All ports will accept 350 bar.</li> </ul>		

### Performance Chart



### X OPERATION

**6E** Pilot-to-shift

### Y SPOOL CONFIGURATION

**23** Spool 4-Way, 3-Position, Open Centre

### Z OPTIONS

**N** Non-adjustable