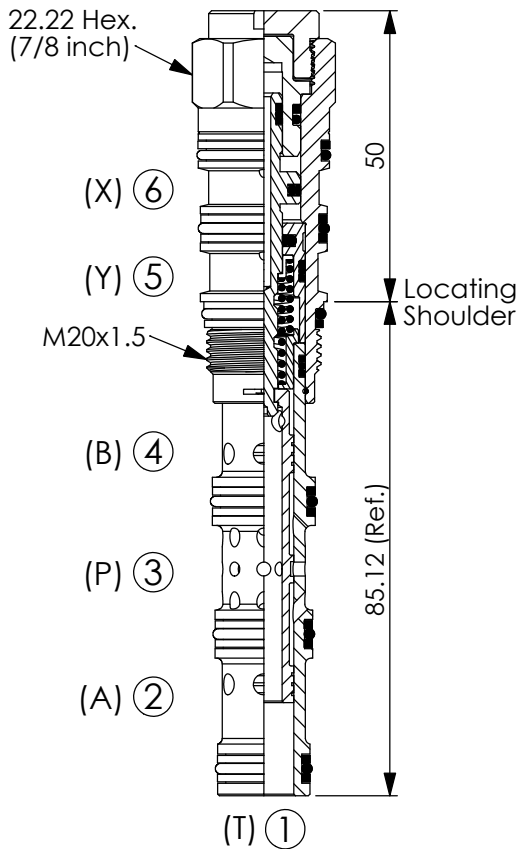


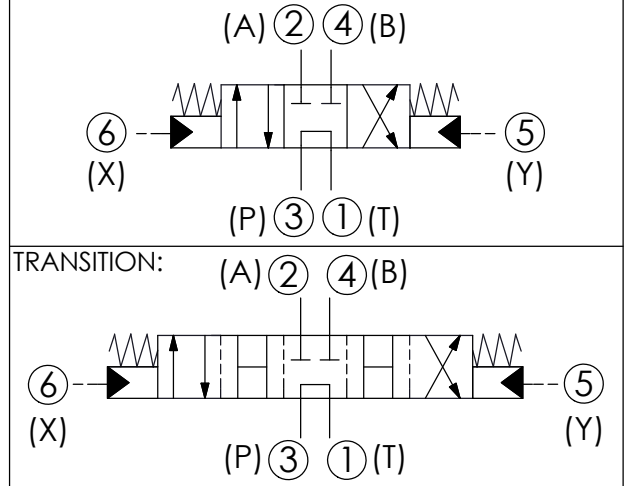
## DIRECTIONAL VALVE (4-Way, 3-Position Spool, Pilot-to-shift)

Ordering Code: **DC-61A-X-Y-Z**



UNIT:mm

Illustrations / detail are for reference only. Data subject to change.



### TECHNICAL DATA

Max. Operating pressure: 350 bar

Rated flow: 28 - 40 l/min  
(Refer To Performance Chart)

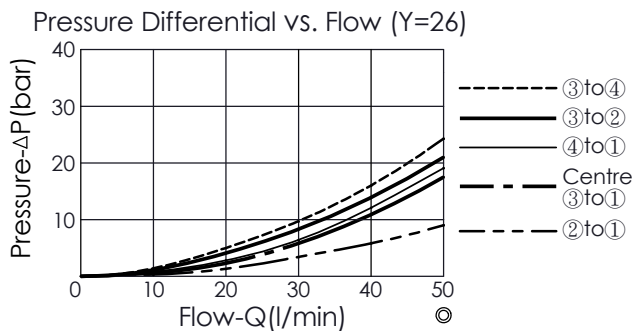
Cavity-Tooling: 61A-6

Installation torque: 40 - 50 Nm

Weight: 0.202 kg

- Minimum Pilot Pressure Required to Shift Valve : 12 bar.
- Maximum Leakage Approximately (30 cc/min./70 bar)
- All ports will accept 350 bar.

### Performance Chart



### X OPERATION

**6E** Pilot-to-shift

### Y SPOOL CONFIGURATION

**26** Spool 4-Way, 3-Position, Tandem Centre

### Z OPTIONS

**N** Non-adjustable