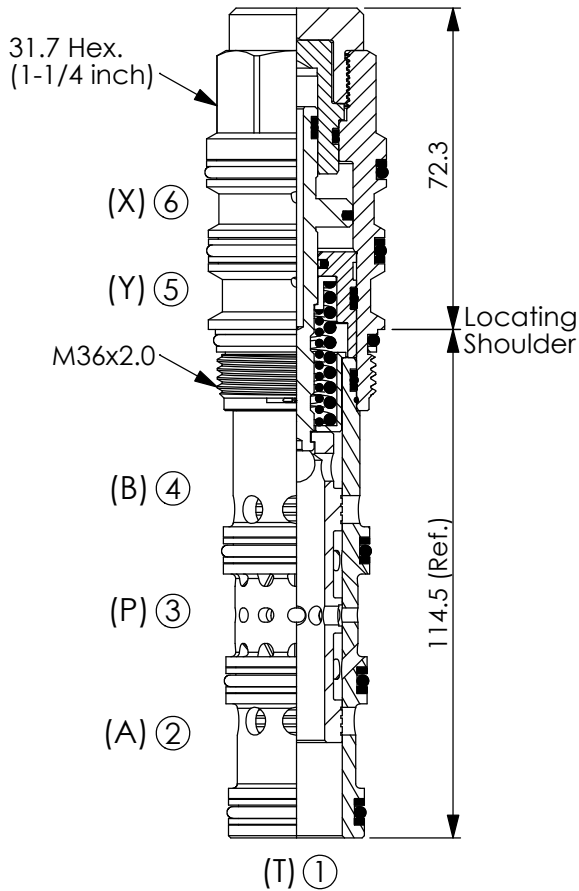


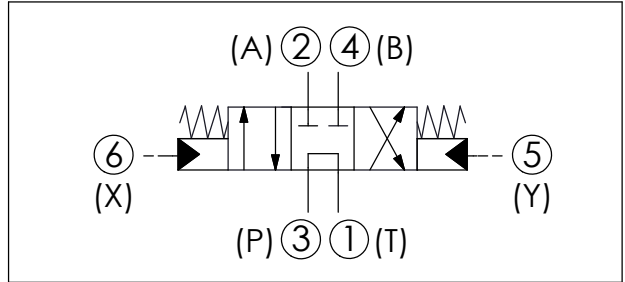
DIRECTIONAL VALVE (4-Way, 3-Position Spool, Pilot-to-shift)

Ordering Code: **DC-63A-X-Y-Z**

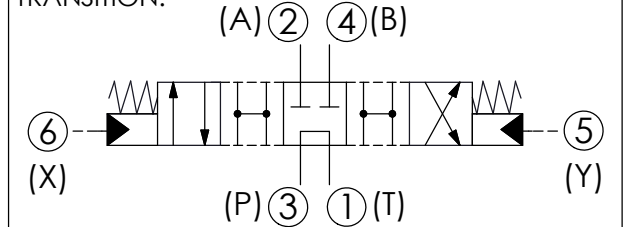


UNIT:mm

Illustrations / detail are for reference only. Data subject to change.



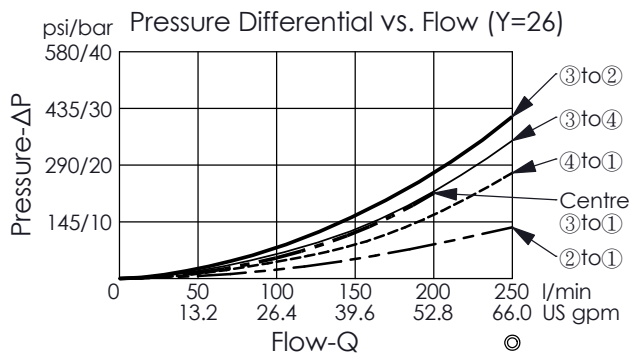
TRANSITION:



TECHNICAL DATA

Max. Operating pressure:	350 bar
Rated flow:	95 - 380 l/min (Refer To Performance Chart)
Cavity-Tooling:	63A-6
Installation torque:	200 - 215 Nm
Weight:	0.839 kg

- Minimum Pilot Pressure Required to Shift Valve : 9 bar.
- Maximum Leakage Approximately (30 cc/min./70 bar)
- All ports will accept 350 bar.
- To maintain the spool in the correct center position, it is recommended that the flow from port ③ to port ① should be less than 200 LPM. If you have any questions, please contact the Winner sales department.



Y	SPOOL CONFIGURATION	
26	Spool 4-Way, 3-Position, Tandem Centre	

X	OPERATION	
6E	Pilot-to-shift	

Z	OPTIONS	
N	Non-adjustable	