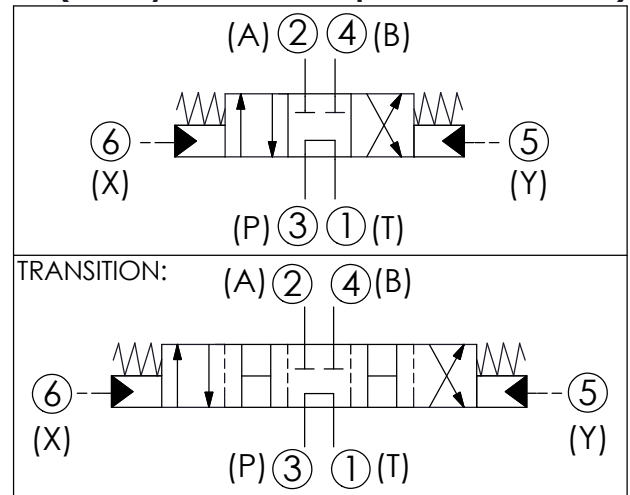
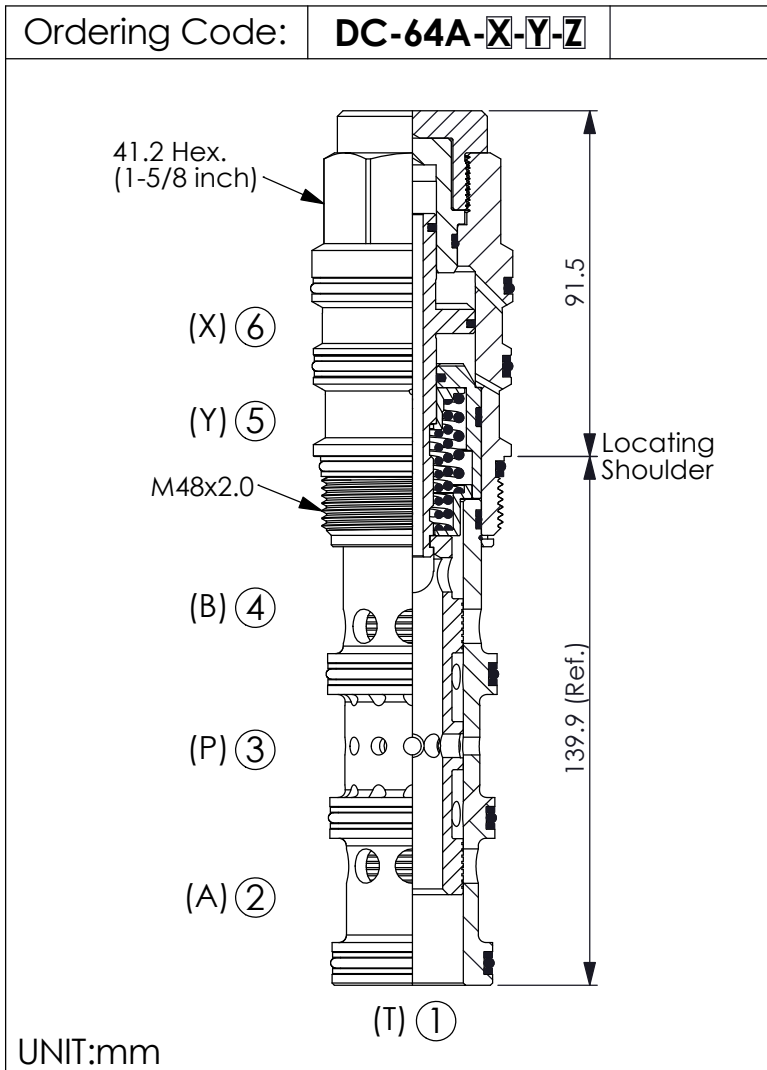


DIRECTIONAL VALVE (4-Way, 3-Position Spool, Pilot-to-shift)



TECHNICAL DATA

Max. Operating pressure: 350 bar

Rated flow: 200 - 760 l/min
(Refer To Performance Chart)

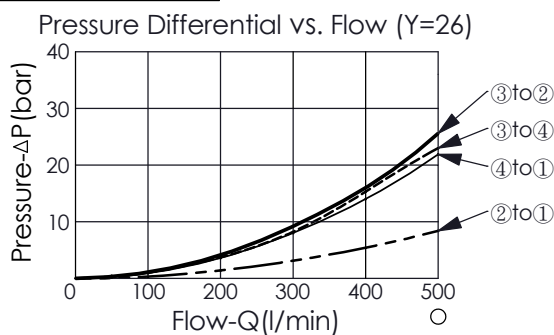
Cavity-Tooling: 64A-6

Installation torque: 465 - 500 Nm

Weight: 1.823 kg

- Minimum Pilot Pressure Required to Shift Valve : 9 bar.
- Maximum Leakage Approximately (30 cc/min./70 bar)
- All ports will accept 350 bar.

Performance Chart



X OPERATION

6E Pilot-to-shift

Y SPOOL CONFIGURATION

26 Spool 4-Way, 3-Position,
Tandem Centre

Z OPTIONS

N Non-adjustable