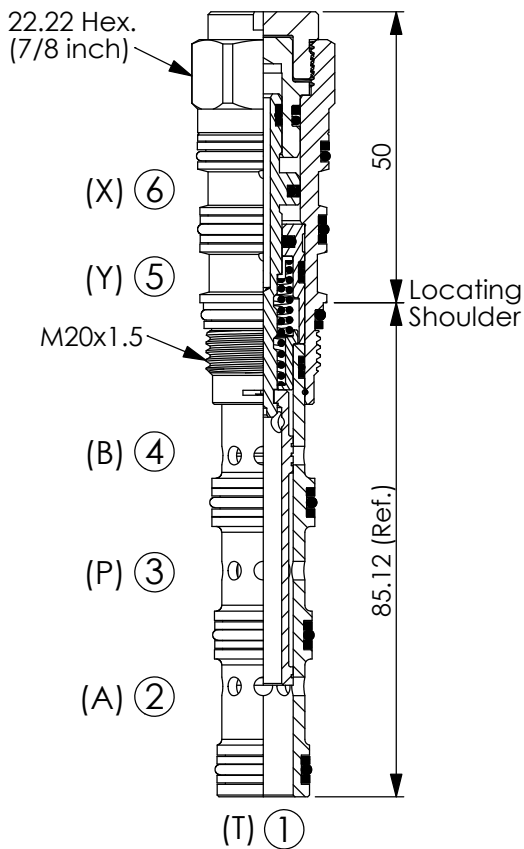


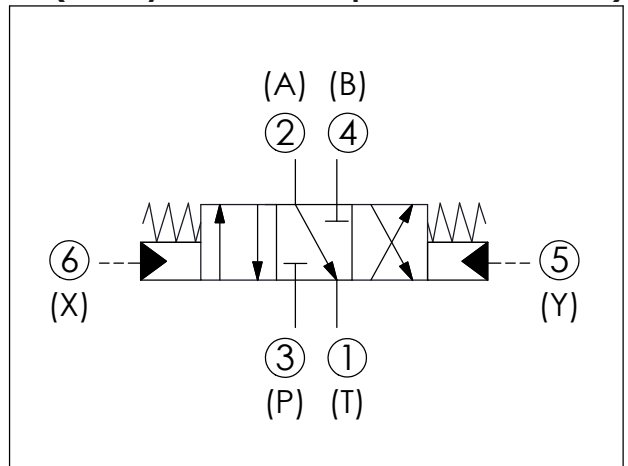
DIRECTIONAL VALVE (4-Way, 3-Position Spool, Pilot-to-shift)

Ordering Code: **DC-61A-X-Y-Z**



UNIT:mm

Illustrations / detail are for reference only. Data subject to change.



TECHNICAL DATA

Max. Operating pressure: 350 bar

Rated flow: 28 - 40 l/min
(Refer To Performance Chart)

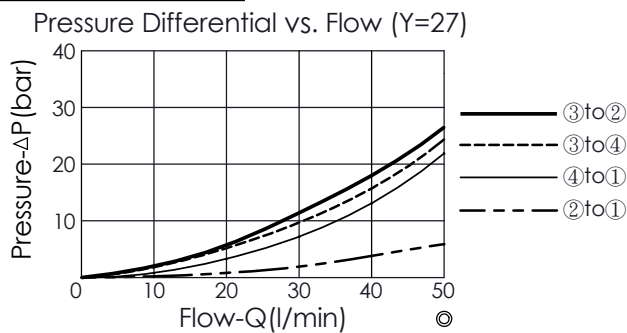
Cavity-Tooling: 61A-6

Installation torque: 40 - 50 Nm

Weight: 0.201 kg

- Minimum Pilot Pressure Required to Shift Valve : 12 bar.
- Maximum Leakage Approximately (30 cc/min./70 bar)
- All ports will accept 350 bar.

Performance Chart



X	OPERATION	
6E	Pilot-to-shift	

Y	SPOOL CONFIGURATION	
27	Spool 4-Way, 3-Position, A to T Centre	

Z	OPTIONS	
N	Non-adjustable	