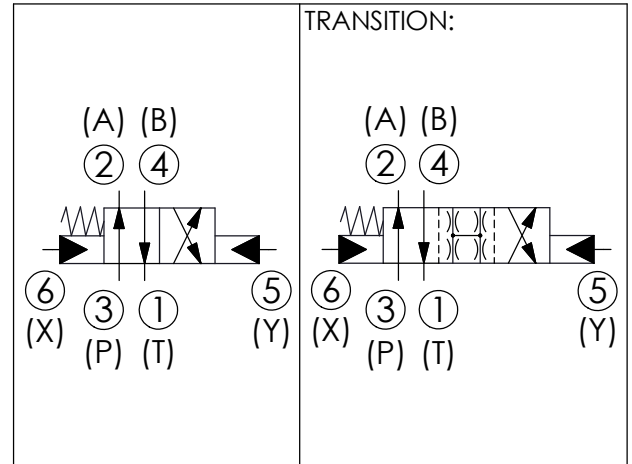
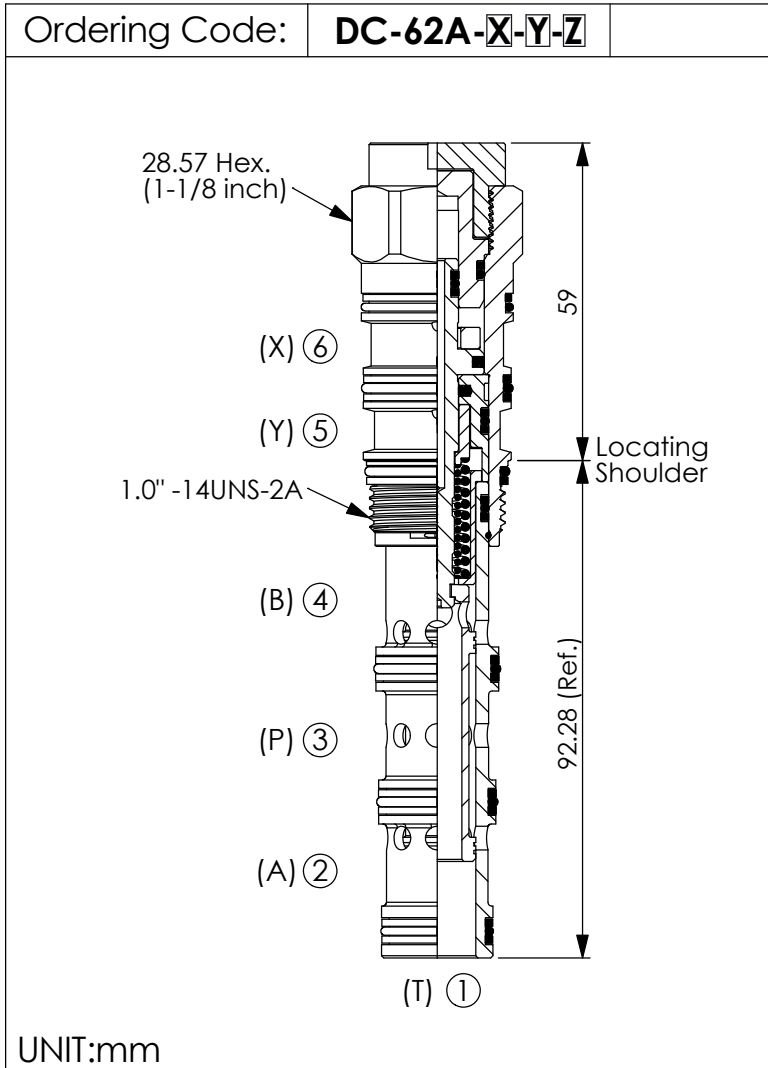


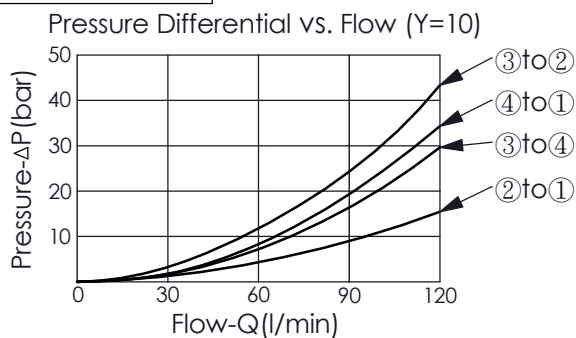
## DIRECTIONAL VALVE (4-Way, 2-Position Spool, Pilot-to-shift)



### TECHNICAL DATA

Max. pressure:	350	bar
Rated flow:	38 - 120	l/min (Refer To Performance Chart)
Cavity-Tooling:	62A-6	
Installation torque:	60 - 70	Nm
Weight:	0.38	kg
<ul style="list-style-type: none"> <li>Minimum Pilot Pressure Required to Shift Valve : 10.5 bar.</li> <li>Maximum Leakage Approximately (30 cc/min./70 bar)</li> <li>All ports will accept 350 bar.</li> </ul>		

### Performance Chart



### X OPERATION

**6E** Pilot-to-shift

### Y SPOOL CONFIGURATION

**10** Spool 4-Way, 2-Position

### Z OPTIONS

**N** Non-adjustable