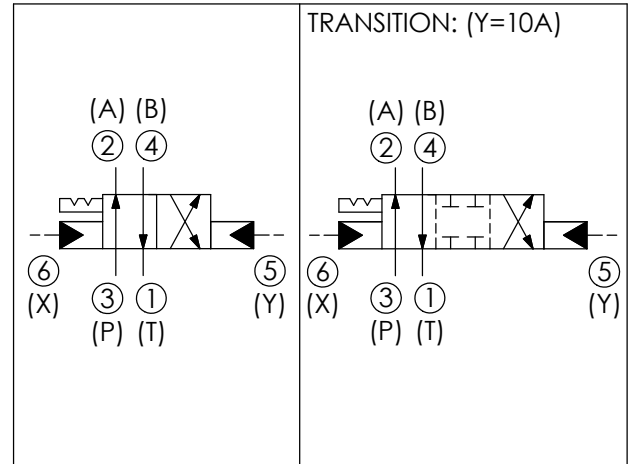
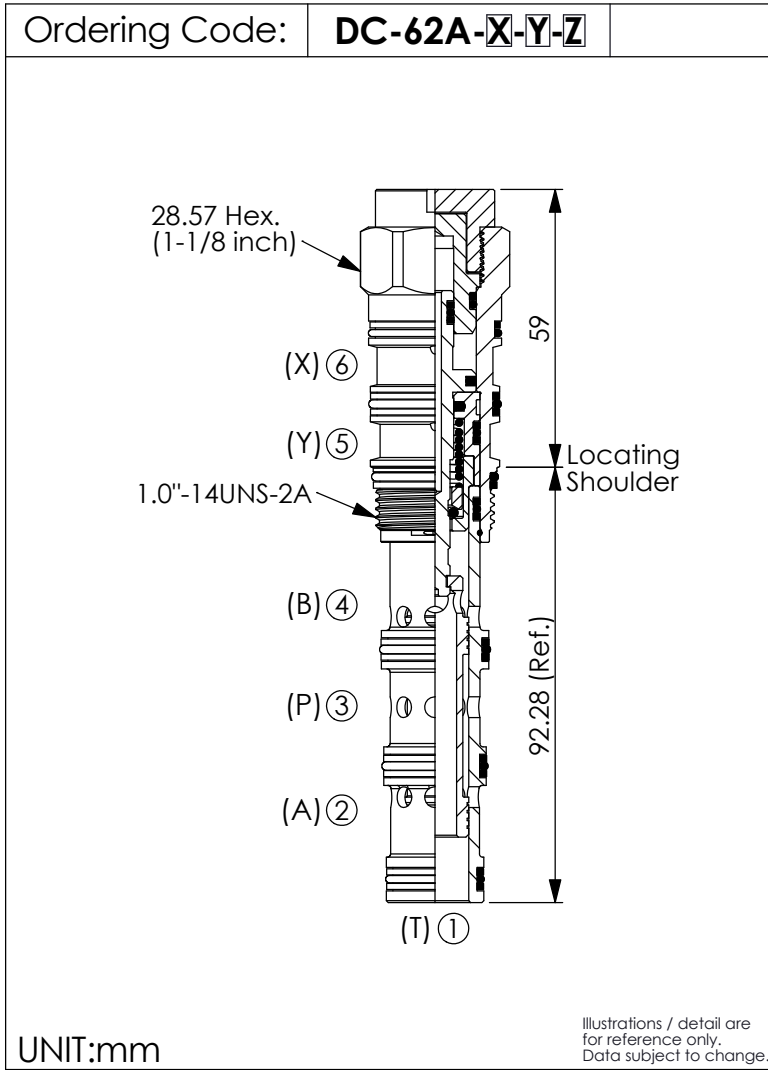
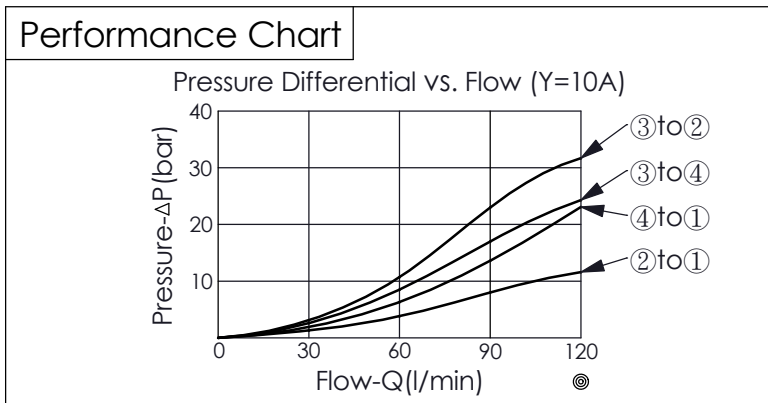


DIRECTIONAL VALVE (4-Way, 2-Position Spool, Pilot-to-shift, Detented)



| TECHNICAL DATA | | |
|---|----------|---------------------------------------|
| Max. pressure: | 350 | bar |
| Rated flow: | 80 - 120 | l/min (Refer To Performance Chart) |
| Cavity-Tooling: | 62A-6 | |
| Installation torque: | 60 - 70 | Nm |
| Weight: | 0.366 | kg |
| <ul style="list-style-type: none"> • Minimum Pilot Pressure Required to Shift Valve : 10.5 bar. • Maximum Leakage Approximately (30 cc/min./70 bar) • All ports will accept 350 bar. | | |



| X | OPERATION | |
|----|--------------------------|--|
| 6D | Pilot-to-shift, Detented | |

| Y | SPOOL CONFIGURATION | |
|-----|---|--|
| 10A | Spool 4-Way, 2-Position, Port ③ to Port ②, Port ④ to Port ①, 4 Ports Blocked At Transition Position, After Transition, Port ③ to Port ④, Port ② to Port ① | |

| Z | OPTIONS | |
|---|----------------|--|
| N | Non-adjustable | |