

## DIRECTIONAL VALVE

(3-Way, 2-Position Direct Acting, Port ③ to Port ④, Shift Port ② to Port ③)

Ordering Code: **DD-21A-X-Y-Z**

Control Option:  
Maximum extension  
from locating shoulder.  
(Z=L Control shown)

4.0 Hex.

3/8"-24UNF-2A

14.27 Hex. (9/16 inch)  
Torque 9 - 10 Nm  
Apply CH (5JAA097)  
Plastic tamper  
resistant cover

Ø 19

22.22 Hex.  
(7/8 inch)

79

④

③

②

①

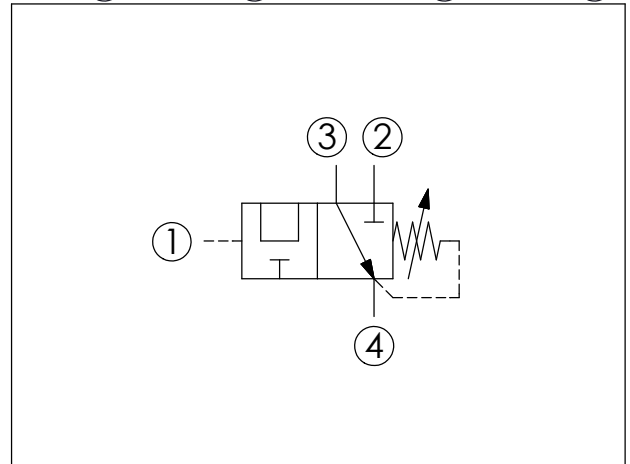
M20x1.5

35.05 (Ref.)

Locating  
Shoulder

UNIT:mm

Illustrations / detail are  
for reference only.  
Data subject to change.



### TECHNICAL DATA

Max. pressure: 350 bar

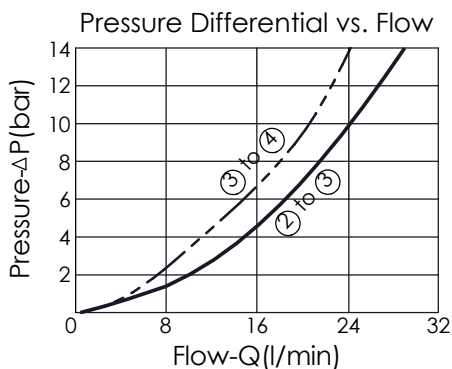
Rated flow: 28 l/min

Cavity-Tooling: 21A-4

Installation torque: 40 - 50 Nm

Weight: 0.18 (Z=L) kg

- Maximum pressure at port ③ recommend be limited to 210 bar, any technical questions, please feel free to consult with our sales dept.
- Pressure at port ④ is directly additive to the setting of the valve.



### X OPERATION

**4R** Port ③ to Port ④;  
Port ① pilot to shift,  
Port ② to Port ③

- Maximum Leakage Approximately (25 cc/min./70 bar)

### Y PRESSURE SETTING

**E** 1.7 - 28 bar (14 bar Standard Setting)

**N** 4 - 55 bar (25 bar Standard Setting)

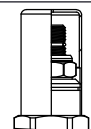
**S** 1.7 - 14 bar (14 bar Standard Setting)

### Z OPTIONS

**L** Leakproof hex.  
socket screw.



**C** Stainless Steel  
Tamper Resistant  
Cover.



**K** Handknob with  
Lock Knob.  
(Order Code: 6ZAK001)

