

DIRECTIONAL VALVE (3-Way, 2-Position, Direct Acting, Normally-Closed, Shift Port ② to Port ③)

Ordering Code: **DD-21A-X-Y-Z**

Control Option:
Maximum extension
from locating shoulder.
(Z=L Control shown)

4.0 Hex.

3/8"-24UNF-2A

14.27 Hex. (9/16 inch)
Torque 9 - 10 Nm
Apply CH (5JAA097)
Plastic tamper
resistant cover

ϕ 19

22.22 Hex.
(7/8 inch)

77

4

3

M20x1.5

2

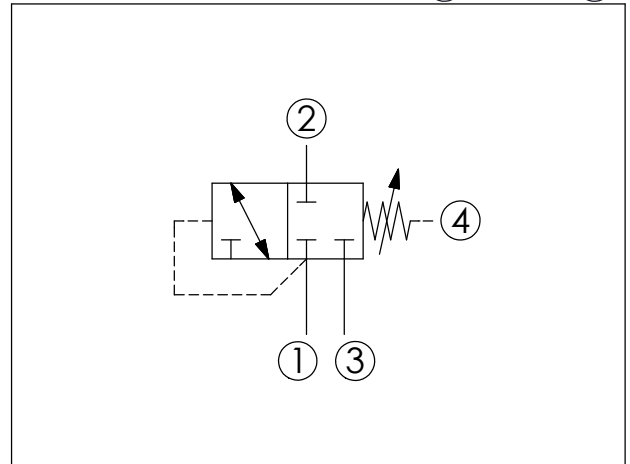
1

35.05 (Ref.)

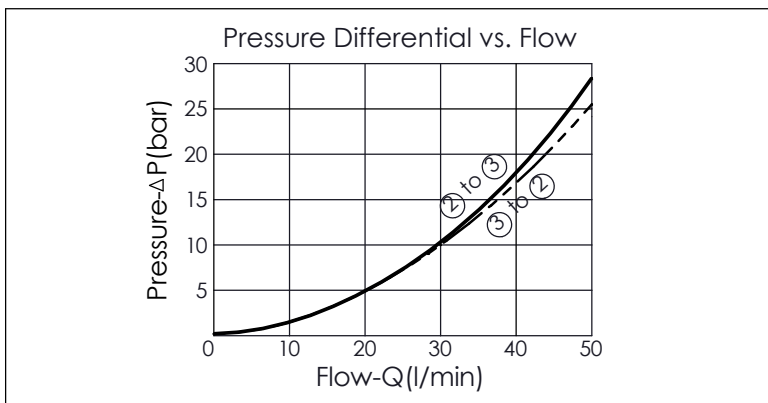
Locating
Shoulder

UNIT:mm

Illustrations / detail are
for reference only.
Data subject to change.



TECHNICAL DATA		
Max. pressure:	350	bar
Rated flow:	28	l/min
Cavity-Tooling:	21A-4	
Installation torque:	40 - 50	Nm
Weight:	0.181 (Z=L)	kg
<ul style="list-style-type: none"> Maximum pressure at port ③ recommend be limited to 210 bar, any technical questions, please feel free to consult with our sales dept. Pressure at port ④ is directly additive to the setting of the valve. 		



X	OPERATION	
4N	Normally closed; Port ① pilot to shift, Port ② to Port ③	
<ul style="list-style-type: none"> Maximum Leakage Approximately (25 cc/min./70 bar) 		

Y	PRESSURE SETTING	
A	35 - 210 bar	(70 bar Standard Setting)
B	3.5 - 105 bar	(14 bar Standard Setting)
D	1.7 - 55 bar	(14 bar Standard Setting)
E	1.7 - 28 bar	(14 bar Standard Setting)
S	1.7 - 14 bar	(7 bar Standard Setting)
W	50 - 315 bar	(70 bar Standard Setting)

Z	OPTIONS	
L	Leakproof hex. socket screw.	
CB	Plastic Tamper Resistant Cover (Order Code:5JAA093)	
K	Handknob with Lock Knob. (Order Code: 6ZAK001)	