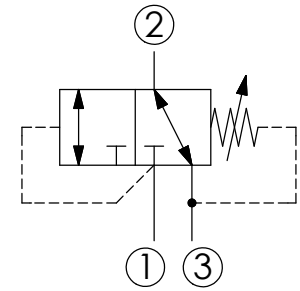
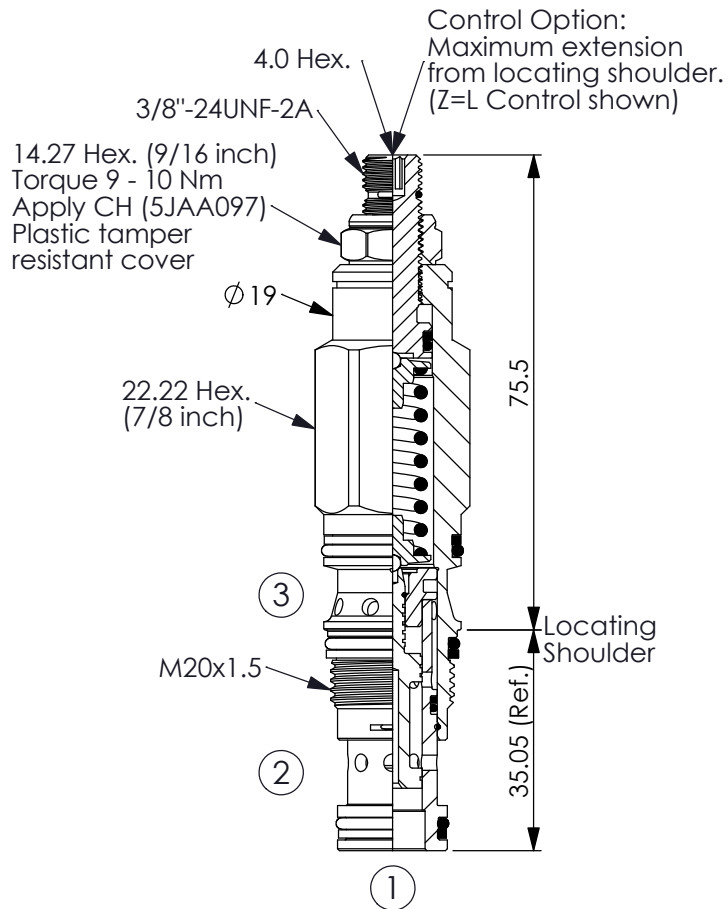


Ordering Code: **DD-11A-X-Y-Z**



TECHNICAL DATA

Max. pressure: 350 bar

Rated flow: 28 l/min

Cavity-Tooling: 11A-3

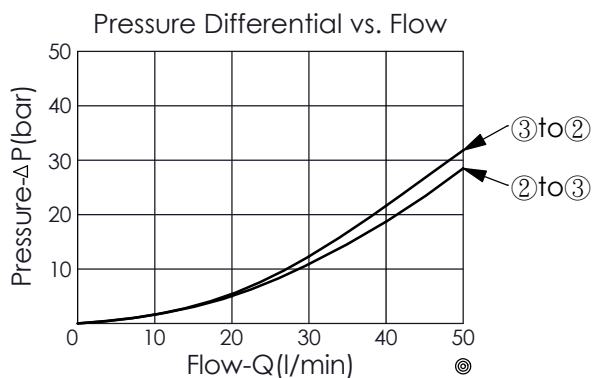
Installation torque: 40 - 50 Nm

Weight: 0.183 (Z=L) kg

• Pressure at Port ③ is added to the valve setting directly, so we do not recommend Port ③ as a work port. If there is a requirement, please consider DD-* -4Q--.

UNIT:mm

Illustrations / detail are
for reference only.
Data subject to change.



X OPERATION

3Q Port ② to Port ③,
Port ① pilot to shift,
Port ① to Port ②

• Maximum Leakage Approximately
(30 cc/min.)

Y PRESSURE SETTING

A 35 - 210 bar (70 bar Standard Setting)

B 3.5 - 105 bar (14 bar Standard Setting)

D 1.7 - 55 bar (14 bar Standard Setting)

E 1.7 - 28 bar (14 bar Standard Setting)

S 1.7 - 14 bar (7 bar Standard Setting)

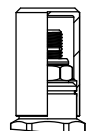
W 50 - 315 bar (70 bar Standard Setting)

Z OPTIONS

L Leakproof hex.
socket screw.



CB Plastic Tamper
Resistant Cover
(Order Code:5JAA093)



K Handknob with
Lock Knob.
(Order Code: 6ZAK001)

