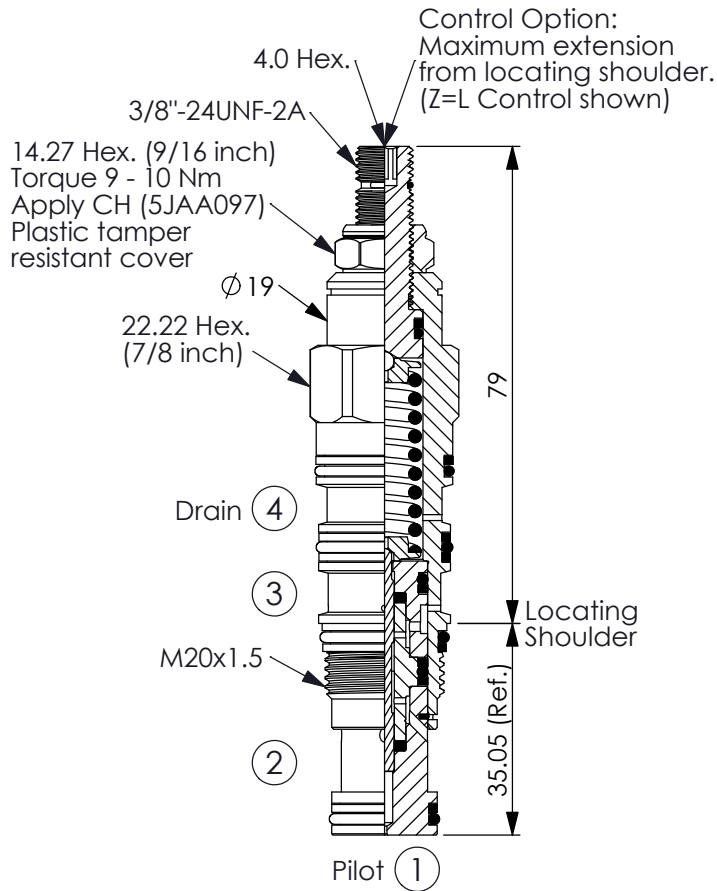


DIRECTIONAL VALVE

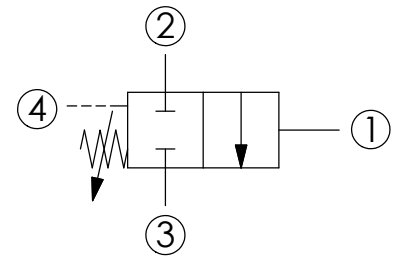
(2-Way, 2-Position, Pilot-to-Shift, Direct Acting, Normally-Closed, Drain)

Ordering Code: **DD-21A-X-Y-Z**



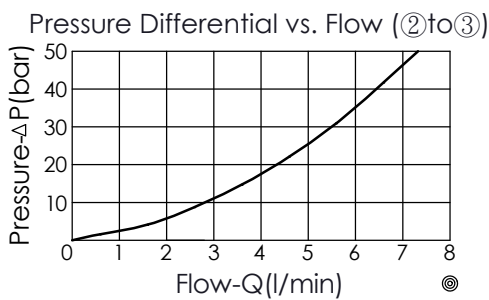
UNIT:mm

Illustrations / detail are
for reference only.
Data subject to change.



TECHNICAL DATA

Max. pressure:	350	bar
Rated flow:	2	l/min
Cavity-Tooling:	21A-4	
Installation torque:	40 - 50	Nm
Weight:	0.195 (Z=L)	kg



X OPERATION

44 Normally-Closed,
Port ① pilot to shift,
Port ② to Port ③

• Maximum Leakage Approximately
(20 drops/min.)

Y PRESSURE SETTING

A 70 - 210 bar (70 bar Standard Setting)

C 140 - 420 bar (140 bar Standard Setting)

Z OPTIONS

L Leakproof hex.
socket screw.



C Stainless Steel
Tamper Resistant
Cover.

