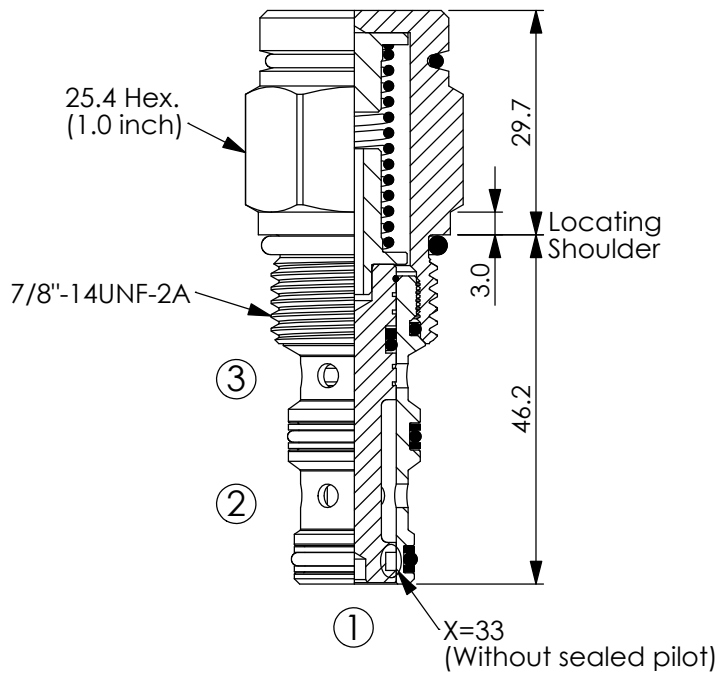


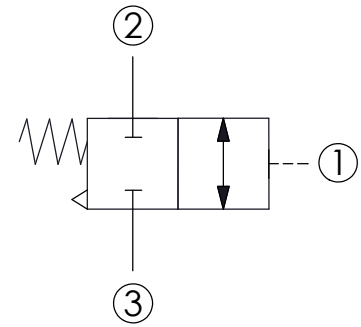
DIRECTIONAL VALVE (Piloted 2-Position 2-Way Spool, Normally Closed) (Vented, Atmospherically Referenced)

Ordering Code: **DD-10W-X-Y-Z**



UNIT:mm

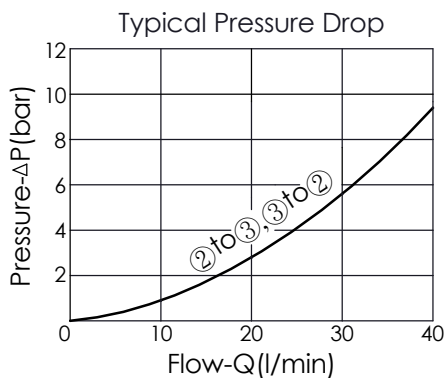
Illustrations / detail are for reference only. Data subject to change.



TECHNICAL DATA

Max. pressure:	350	bar
Rated flow:	38	l/min
Cavity-Tooling:	10W-3	
Installation torque:	35 - 45	Nm
Weight:	0.163	kg

• Approximately 1 drop (0.07 cc) of fluid will pass from the pilot area to the vented spring chamber every 4000 cycles.



X OPERATION

33 Normally Closed (Port ① spool without sealed pilot)

3C Normally Closed (Port ① spool with sealed pilot)

• Maximum Leakage Approximately (82 cc/min./210 bar)

SPRINGS

Y Cracking pressure

41 4.1 bar

76 7.6 bar

117 11.7 bar

Z OPTIONS

N Non-adjustable