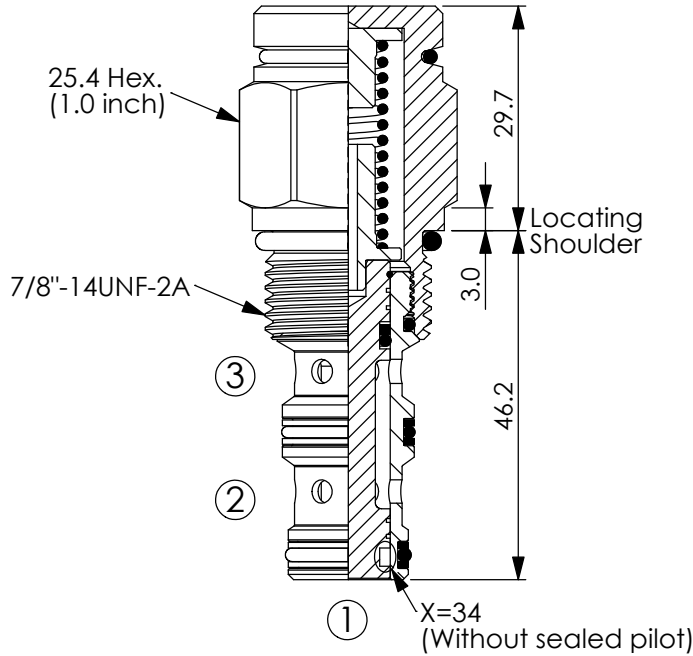


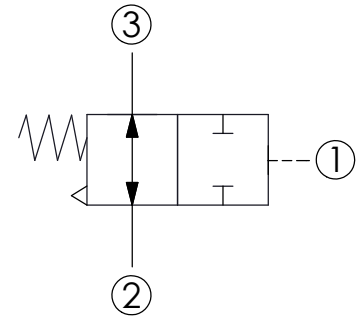
DIRECTIONAL VALVE (Piloted 2-Position 2-Way Spool, Normally Open) (Vented, Atmospherically Referenced)

Ordering Code: **DD-10W-X-Y-Z**



UNIT:mm

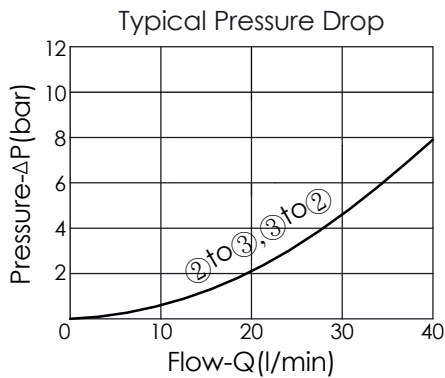
Illustrations / detail are for reference only. Data subject to change.



TECHNICAL DATA

Max. pressure:	350	bar
Rated flow:	38	l/min
Cavity-Tooling:	10W-3	
Installation torque:	35 - 45	Nm
Weight:	0.159	kg

- Approximately 1 drop (0.07 cc) of fluid will pass from the pilot area to the vented spring chamber every 4000 cycles.
- The rated pressure of WINNER's products are complied with NFPA T2.6.1 fatigue test. Please refer WINNER technical information. (T.101.108.E TECHNICAL DATA STATEMENT) (T.101.109.E FATIGUE AND BURST PRESSURE TEST STANDARD)



X OPERATION

34	Normally Open (Port ① spool without sealed pilot)
3D	Normally Open (Port ① spool with sealed pilot)

- Maximum Leakage Approximately (82 cc/min./210 bar)

Y

SPRINGS

Cracking pressure

41	4.1 bar
76	7.6 bar
117	11.7 bar

Z

OPTIONS

N Non-adjustable