

## DIRECTIONAL VALVE (Piloted 2-Position 3-Way Spool, Internal Vent)

Ordering Code: **DD-10W-X-Y-Z**

25.4 Hex. (1.0 inch)

7/8"-14UNF-2A

20.6

Locating Shoulder

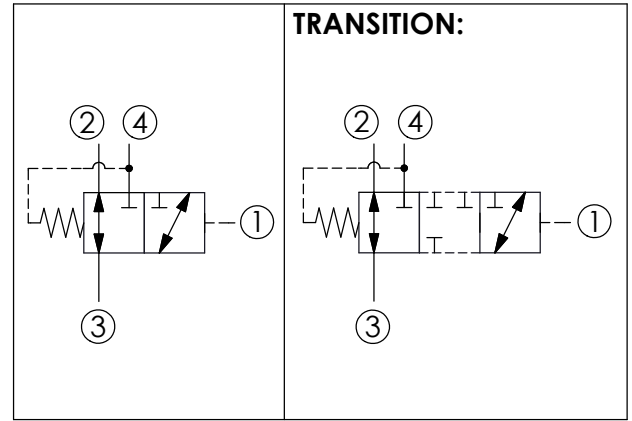
62.5

Pilot ①

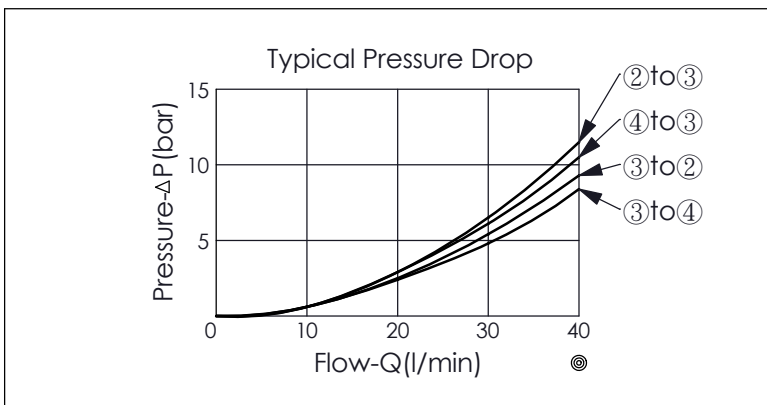
Z=N (Without sealed pilot)

UNIT:mm

Illustrations / detail are for reference only. Data subject to change.



TECHNICAL DATA		
Max. pressure:	240	bar
Rated flow:	38	l/min
Cavity-Tooling:	10W-4	
Installation torque:	35 - 45	Nm
Weight:	0.163	kg
<ul style="list-style-type: none"> <li>Back pressure of Port ④ will increase pilot pressure of Port ① at ratio 1:1, plus pressure of bias spring.</li> </ul>		



X	OPERATION	
<b>42</b>	Port ③ to Port ②; Port ① pilot to shift, Port ③ to Port ④	
<ul style="list-style-type: none"> <li>Port ② · Port ③ · Port ④ of Maximum Leakage Approximately ( 50 cc/min./240 bar )</li> </ul>		

Y	SPRINGS	
	Cracking pressure	
<b>55</b>	5.5 bar	
<b>110</b>	11.0 bar	

Z	OPTIONS	
<b>N</b>	Non-adjustable, The transition between positions is closed. (Port ① spool without sealed pilot)	