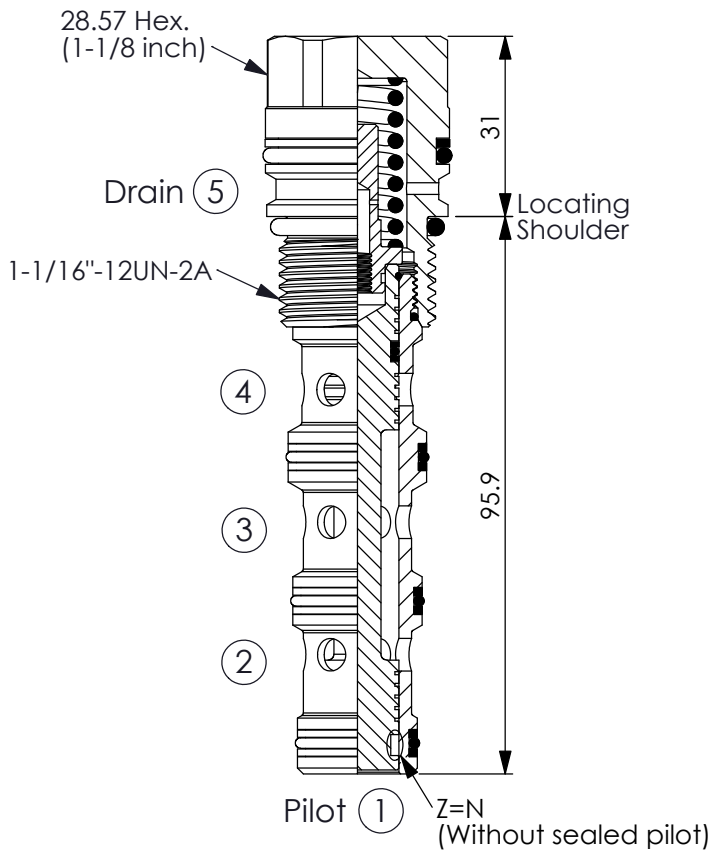


(Piloted 3-Way, 2-Position Spool, Port ③ to Port ②, Shift Port ③ to Port ④)

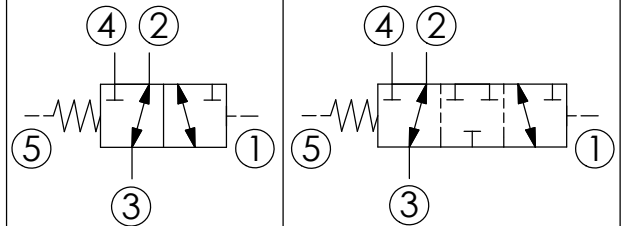
Ordering Code: **DD-12WH-X-Y-Z**



UNIT:mm

Illustrations / detail are for reference only. Data subject to change.

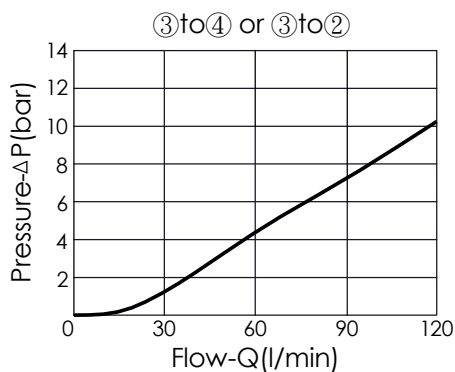
TRANSITION:



TECHNICAL DATA

| | | |
|-----------------------|---------|-------|
| Max. pressure: | 240 | bar |
| Rated flow: | 80 | l/min |
| Cavity-Tooling: | 12WH-5 | |
| Installation torque: | 45 - 55 | Nm |
| Weight Approximately: | 0.35 | kg |

· All ports will accept 240 bar.



X OPERATION

5S Port ③ to Port ②,
Port ① pilot to shift,
Port ③ to Port ④

Y SPRINGS

Cracking pressure

| | |
|------------|----------|
| 70 | 7.0 bar |
| 117 | 11.7 bar |
| 150 | 15.0 bar |

Z OPTIONS

| | |
|-----------|--|
| N | Non-adjustable (Port ① spool without sealed pilot) |
| N5 | Non-adjustable (Port ① spool with sealed pilot) |