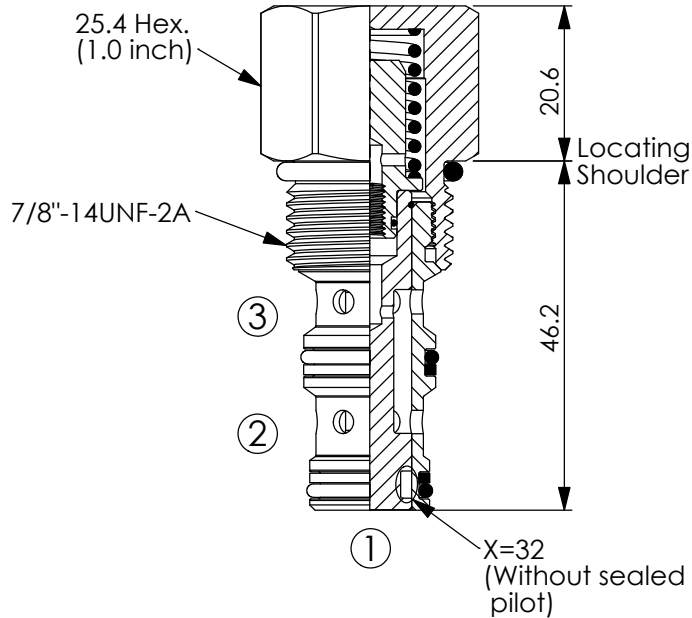


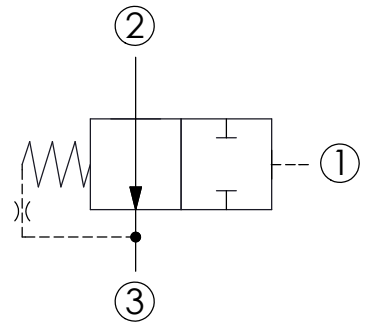
DIRECTIONAL VALVE (Piloted 2-Position 2-Way Spool, Normally Open, Internal Vent)

Ordering Code: **DD-10W-X-Y-Z**



UNIT:mm

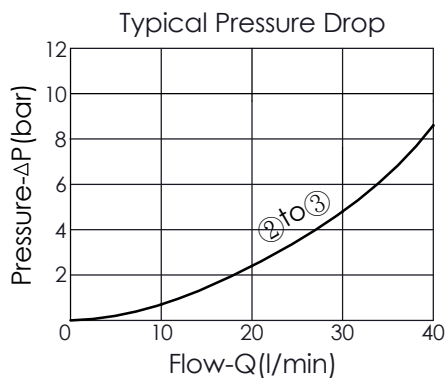
Illustrations / detail are for reference only. Data subject to change.



TECHNICAL DATA

Max. pressure:	350	bar
Rated flow:	40	l/min
Cavity-Tooling:	10W-3	
Installation torque:	35 - 45	Nm
Weight:	0.141	kg

- Pressure of port ① must higher than port ③ plus spring pressure when using port ③ to port ②. Or select DD-10W-33-Y-N.
- Back pressure of Port ③ will increase pilot pressure of Port ① at ratio 1:1, plus pressure of bias spring.



X OPERATION

32	Normally Open (Port ① spool without sealed pilot)
3B	Normally Open (Port ① spool with sealed pilot)

- Maximum Leakage Approximately (82 cc/min./210 bar)

Y

SPRINGS

Cracking pressure

70

7.0 bar

100

10.0 bar

140

14.0 bar

Z

OPTIONS

N

Non-adjustable