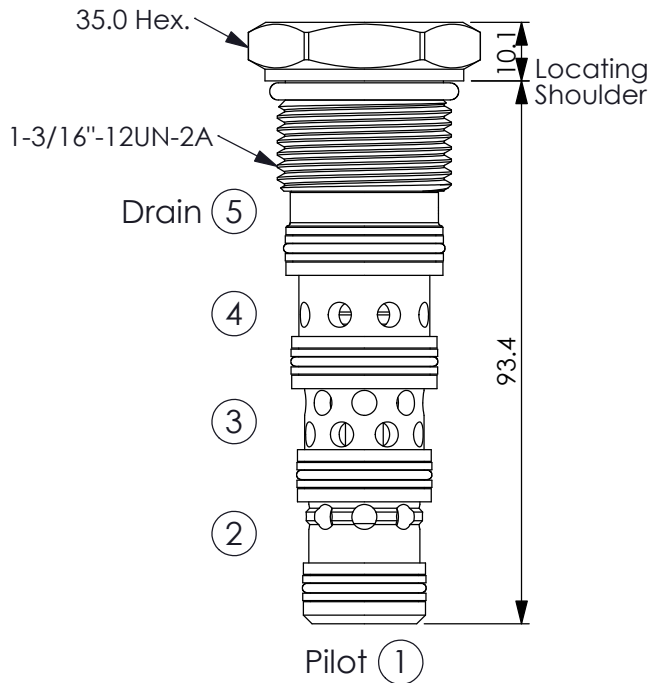


(Piloted 3-Way, 2-Position Spool, Port ③ to Port ②, Shift Port ③ to Port ④)

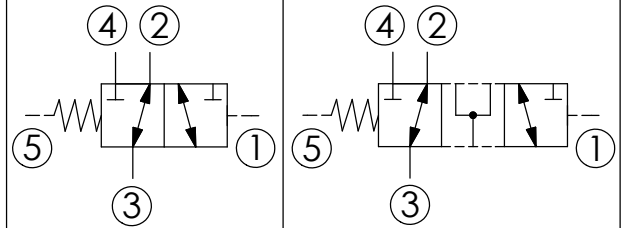
Ordering Code: **DD-14WA-X-Y-Z**



UNIT:mm

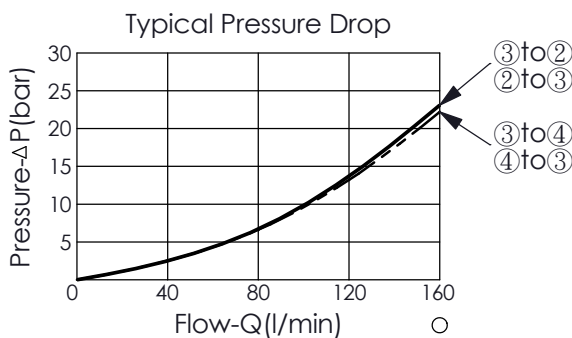
Illustrations / detail are for reference only. Data subject to change.

TRANSITION:



TECHNICAL DATA

Rated pressure:	350	bar
(Max. pressure:	420	bar)
Rated flow:	160	l/min
Nominal flow at 7 bar:	90	l/min
(If flow exceeds 90 LPM, please choose an enlarged cavity.)		
Cavity-Tooling:	14WA-5	
Installation torque:	85	Nm
Weight:	0.325	kg



X OPERATION

5E Port ③ to Port ②;
Port ① pilot to shift,
Port ③ to Port ④

• Maximum Leakage Approximately (275 cc/min./200 bar)

Y

SPRINGS

Cracking pressure

050	5.0 bar
069	6.9 bar
100	10.0 bar
150	15.0 bar

Z

OPTIONS

N Non-adjustable
(Port ① spool without sealed pilot)