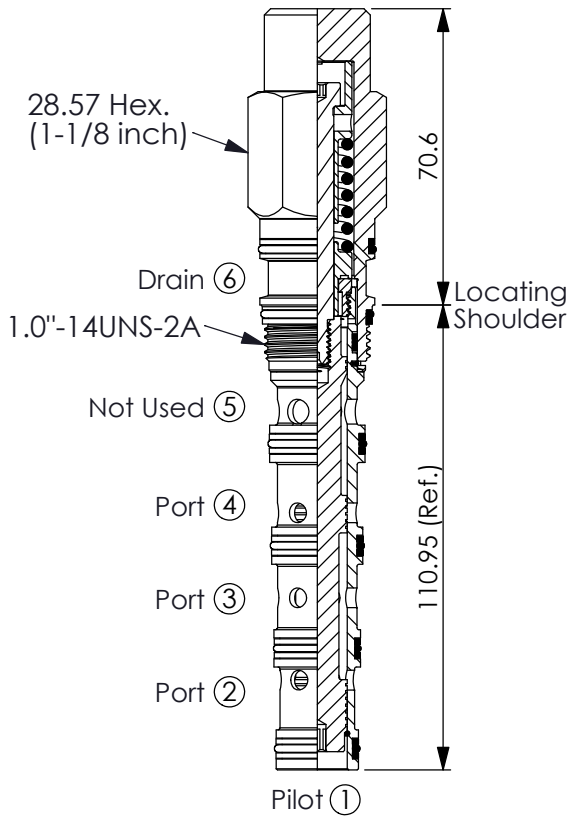


DIRECTIONAL VALVE (3-Way, 2-Position, Pilot-to-Shift)

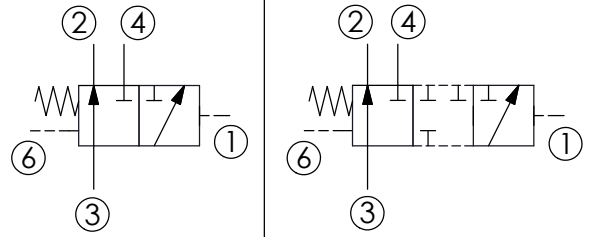
Ordering Code: **DD-52A-X-Y-Z**



UNIT:mm

Illustrations / detail are for reference only. Data subject to change.

TRANSITION:



TECHNICAL DATA

Max. Operating pressure: 350 bar

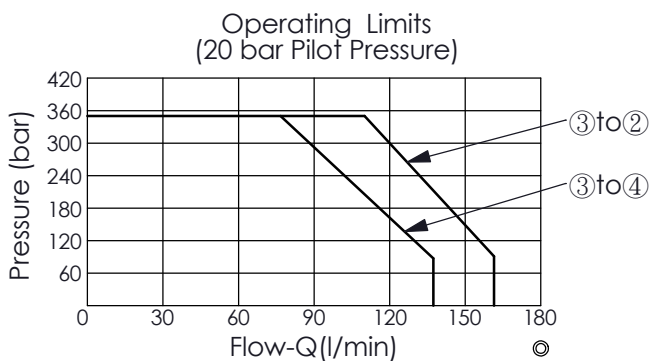
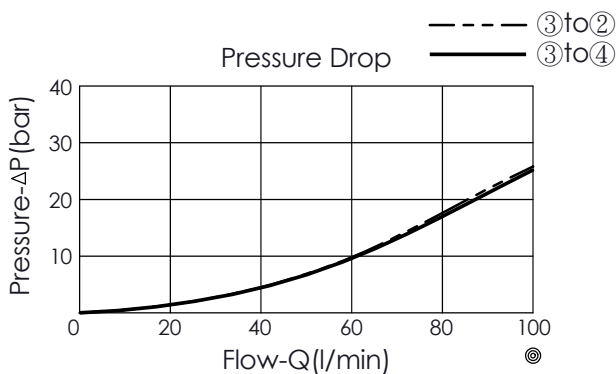
Rated flow: 80 l/min

Cavity-Tooling: 52A-6

Installation torque: 60 - 70 Nm

Weight: 0.494 kg

- Minimum Pilot Pressure Required to Shift Valve : 10 bar.
- Pilot Pressure Required for Full Shift at Rated Flow : 20 bar.
- Maximum Leakage Approximately (30 cc/min./70 bar)
- All ports will accept 350 bar.
- Pressure at port ⑥ directly opposes port ①.



The performance curve or data is only for reference, as customers' using condition, pressure, flow, hydraulic fluid viscosity, cleanliness, temperature and so on are different, the curve or data will be different.

X STRUCTURE

6A Port ① Pilot, Port ⑤ Not Used

Y OPERATION

19A Port ③ to Port ②, Transition Between Positions Is Closed, Port ③ to Port ④ after Shift.

Z OPTIONS

N Non-adjustable