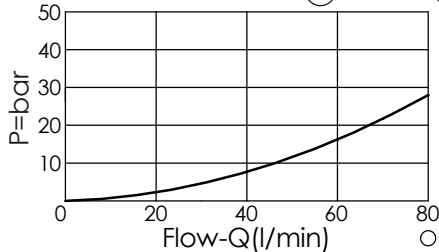


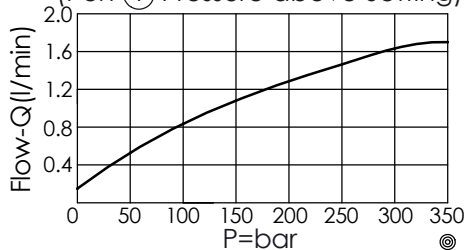
### TECHNICAL DATA

Max. Operating pressure:	350	bar
Rated flow:	60	l/min
Cavity-Tooling:	2A-3	
Installation torque:	60 - 70	Nm
Weight:	0.263 (Z=N)	kg

Pressure Loss / Flow  
Characteristics Port ② to Port ③



Pilot Flow Port ① to Port ③  
(Port ① Pressure above Setting)



### X OPERATION

**3N** Normally closed;  
Port ① pilot to shift,  
Port ② to Port ③

• When the pressure at port ① exceed the setting pressure, there is a control pilot flow (0.16 - 0.25 L/min.)

### Z OPTIONS

<b>L</b>	Leakproof hex. socket screw.	
<b>K</b>	Handknob with Lock Knob. (Order Code: 6ZAK001)	
<b>C</b>	Stainless Steel Tamper Resistant Cover.	

Y	SPRINGS	
	ADJUSTMENT RANGES	
<b>A</b>	7 - 210 bar	(70 bar Standard Setting)
<b>B</b>	3.5 - 105 bar	(70 bar Standard Setting)
<b>C</b>	10.5 - 420 bar	(70 bar Standard Setting)
<b>D</b>	1.7 - 55 bar	(28 bar Standard Setting)
<b>E</b>	1.7 - 28 bar	(14 bar Standard Setting)
<b>H</b>	2 - 210 bar	(70 bar Standard Setting)
<b>W</b>	10.5 - 315 bar	(70 bar Standard Setting)