

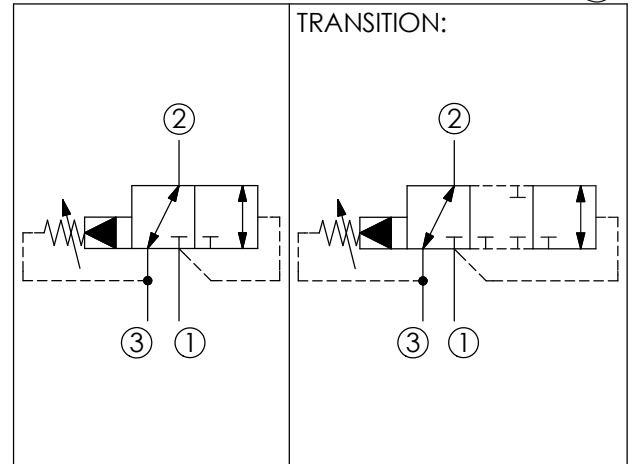
Ordering Code: **DP-11A-X-Y-Z**

Control Option:
Maximum extension
from locating shoulder.
(Z=L Control shown)

4.0 Hex.
3/8"-24UNF-2A
14.27 Hex. (9/16 inch)
Torque 9 - 10 Nm
Apply CH (5JAA097)
Plastic tamper
resistant cover
Ø 19
22.22 Hex.
(7/8 inch)
L=64
K=70
Locating
Shoulder
M20x1.5
35.05 (Ref.)

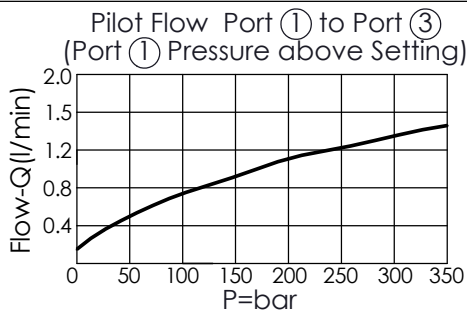
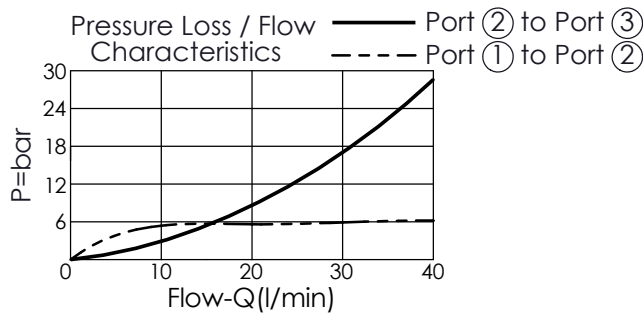
UNIT:mm

Illustrations / detail are
for reference only.
Data subject to change.



TECHNICAL DATA

Max. Operating pressure:	350 bar
Rated flow:	28 l/min
Cavity-Tooling:	11A-3
Installation torque:	40 - 50 Nm
Weight:	0.145 (Z=L) kg



X OPERATION

3Q Port ② to Port ③;
Port ① pilot to shift,
Port ① to Port ②

• When the pressure at port ① exceed the setting pressure, there is a control pilot flow (0.10 - 0.16 L/min.)

Z OPTIONS

L	Leakproof hex. socket screw.	
K	Handknob with Lock Knob. (Order Code: 6ZAK001)	
C	Stainless Steel Tamper Resistant Cover.	

Y SPRINGS

ADJUSTMENT RANGES

A	7 - 210 bar (70 bar Standard Setting)
B	3.5 - 105 bar (70 bar Standard Setting)
C	10.5 - 420 bar (70 bar Standard Setting)
D	1.7 - 55 bar (28 bar Standard Setting)
E	1.7 - 28 bar (14 bar Standard Setting)
K	5 - 105 bar (70 bar Standard Setting)
W	10.5 - 315 bar (70 bar Standard Setting)