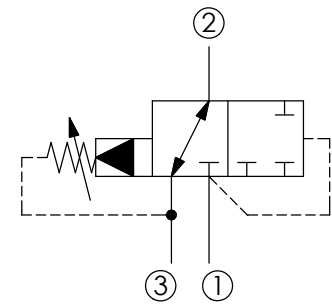
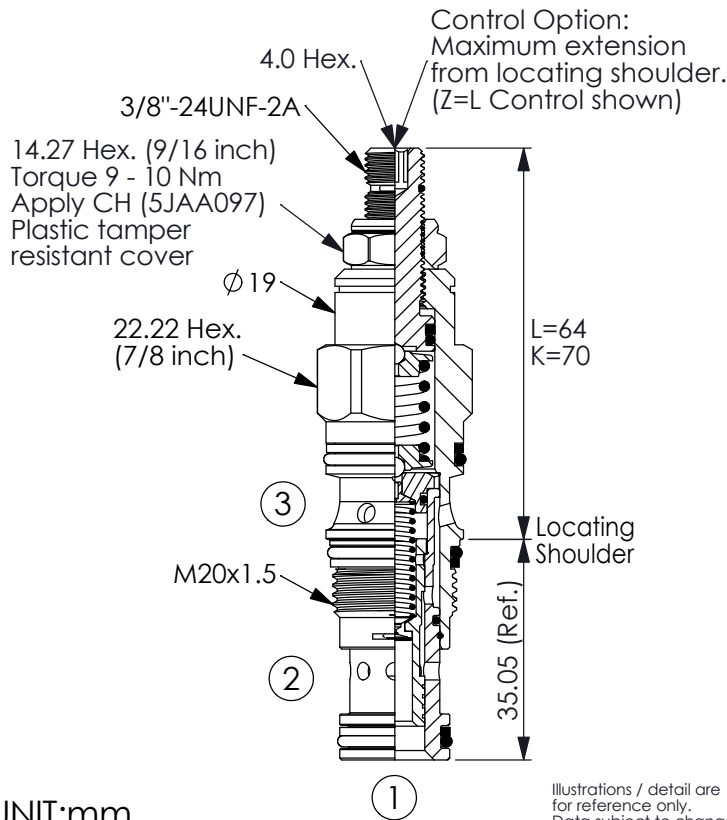


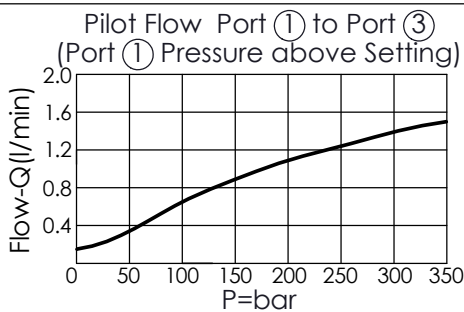
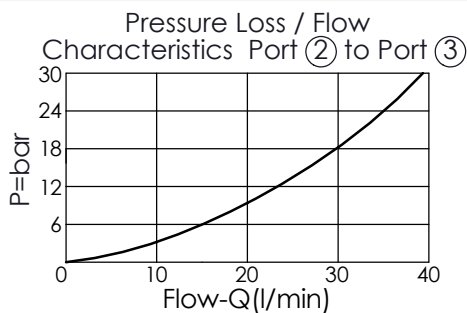
(3-Way, 2-Position, Pilot Operated, With Internal Drain To Port ③, Normally Open)

Ordering Code: **DP-11A-X-Y-Z**



TECHNICAL DATA

Max. Operating pressure:	350 bar
Rated flow:	28 l/min
Cavity-Tooling:	11A-3
Installation torque:	40 - 50 Nm
Weight:	0.145 (Z=L) kg



X OPERATION

3M Normally open, Port ② to Port ③; Port ① pilot to shift, three ports closed

• When the pressure at port ① exceed the setting pressure, there is a control pilot flow (0.10 - 0.16 L/min.)

Z OPTIONS

L	Leakproof hex. socket screw.	
LP	Leakproof hex. socket screw. With stainless steel external metal components (Buna-N Seal)	
K	Handknob with Lock Knob. (Order Code: 6ZAK001)	
C	Stainless Steel Tamper Resistant Cover.	

Y SPRINGS

ADJUSTMENT RANGES

A	7 - 210 bar (70 bar Standard Setting)
B	3.5 - 105 bar (70 bar Standard Setting)
C	10.5 - 420 bar (70 bar Standard Setting)
D	1.7 - 55 bar (28 bar Standard Setting)
E	1.7 - 28 bar (14 bar Standard Setting)
K	5 - 105 bar (70 bar Standard Setting)
W	10.5 - 315 bar (70 bar Standard Setting)