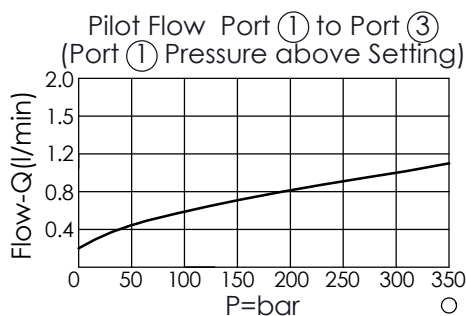
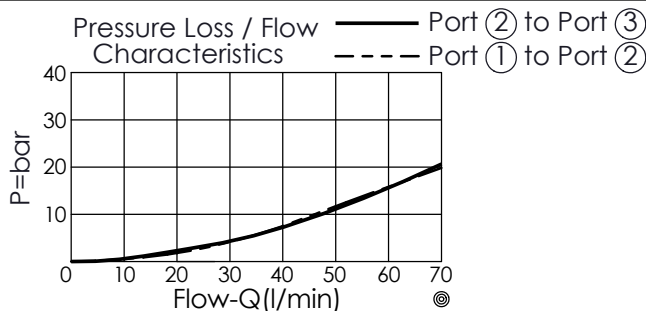


### TECHNICAL DATA

Max. Operating pressure:	350	bar
Rated flow:	60	l/min
Cavity-Tooling:	2A-3	
Installation torque:	60 - 70	Nm
Weight:	0.262 (Z=L)	kg



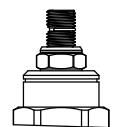
### X OPERATION

**3P** Port ① to Port ②;  
Port ① pilot to shift,  
Port ② to Port ③

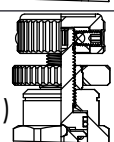
· When the pressure at port ① exceed the setting pressure, there is a control pilot flow (0.16 - 0.25 L/min.)

### Z OPTIONS

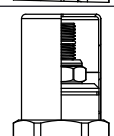
**L** Leakproof hex.  
socket screw.



**K** Handknob with  
Lock Knob.  
(Order Code: 6ZAK001)



**C** Stainless Steel  
Tamper Resistant  
Cover.



### Y SPRINGS

#### ADJUSTMENT RANGES

<b>A</b>	7 - 210 bar (70 bar Standard Setting)
<b>B</b>	3.5 - 105 bar (70 bar Standard Setting)
<b>D</b>	1.7 - 55 bar (28 bar Standard Setting)
<b>E</b>	1.7 - 28 bar (14 bar Standard Setting)
<b>W</b>	10.5 - 315 bar (70 bar Standard Setting)