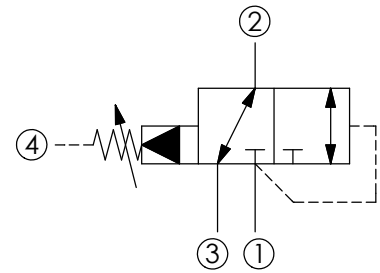
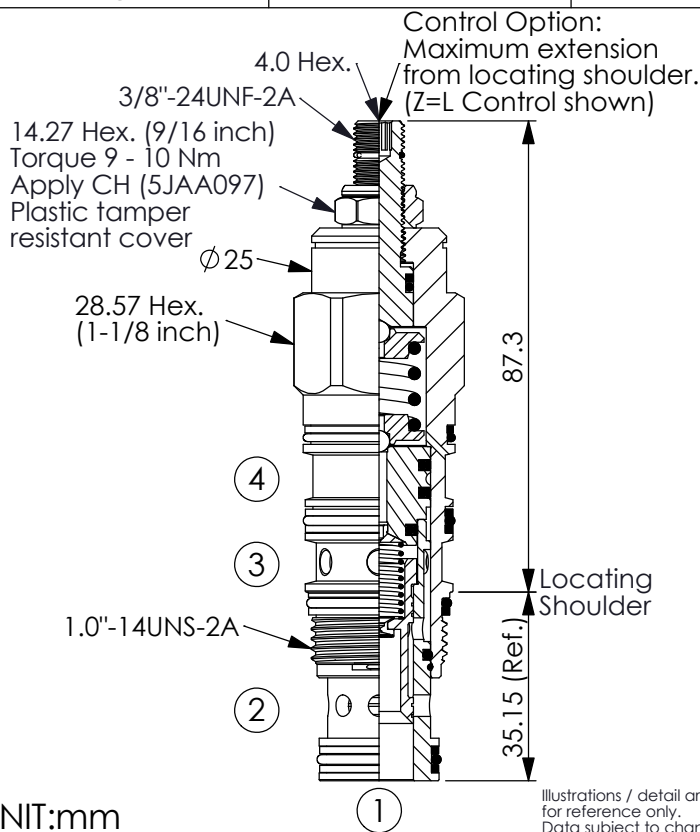


Ordering Code: **DP-22A-X-Y-Z**



### TECHNICAL DATA

Max. Operating pressure: 350 bar

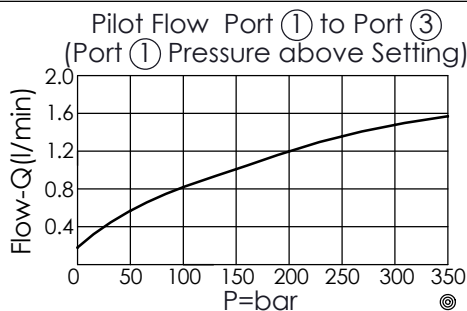
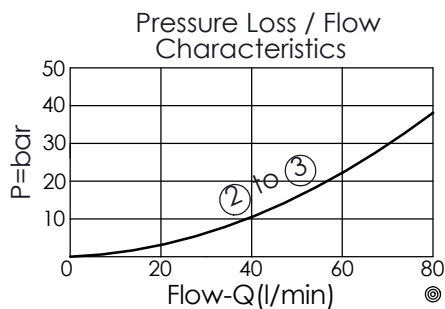
Rated flow: 60 l/min

Cavity-Tooling: 22A-4

Installation torque: 60 - 70 Nm

Weight: 0.324 (Z=L) kg

- Maximum pressure at port ③ recommend be limited to 210 bar, any technical questions, please feel free to consult with our sales dept.
- Pressure at port ④ is directly additive to the setting of the valve.



### X OPERATION

**4Q** Port ② to Port ③;  
Port ① pilot to shift,  
Port ① to Port ②

- When the pressure at port ① exceed the setting pressure, there is a control pilot flow (0.16 - 0.25 L/min.)
- Maximum Leakage Approximately (15 cc/min./70 bar)

### Z OPTIONS

|          |   |  |
|----------|---|--|
| <b>L</b> | Leakproof hex. socket screw.                      |  |
| <b>K</b> | Handknob with Lock Knob.<br>(Order Code: 6ZAK001) |  |
| <b>C</b> | Stainless Steel Tamper Resistant Cover.           |  |

| Y        | SPRINGS           |                           |
|----------|-------------------|---------------------------|
|          | ADJUSTMENT RANGES |                           |
| <b>A</b> | 7 - 210 bar       | (70 bar Standard Setting) |
| <b>B</b> | 3.5 - 105 bar     | (70 bar Standard Setting) |
| <b>D</b> | 1.7 - 55 bar      | (28 bar Standard Setting) |
| <b>E</b> | 1.7 - 28 bar      | (14 bar Standard Setting) |
| <b>W</b> | 10.5 - 315 bar    | (70 bar Standard Setting) |