

TECHNICAL DATA

Max. Operating pressure: 350 bar

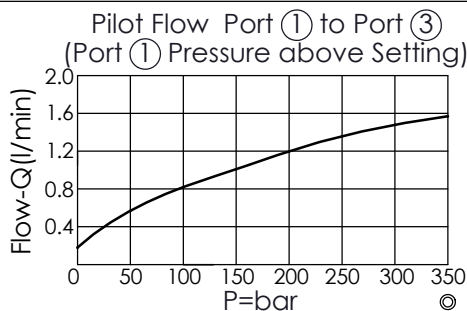
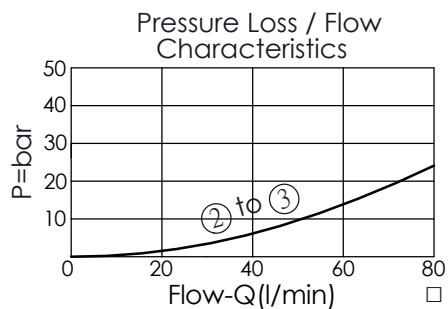
Rated flow: 60 l/min

Cavity-Tooling: 22A-4

Installation torque: 60 - 70 Nm

Weight Approximately: 0.34 (Z=L) kg

- Maximum pressure at port ③ recommend be limited to 210 bar, any technical questions, please feel free to consult with our sales dept.
- Pressure at port ④ is directly additive to the setting of the valve.



X OPERATION

4N Normally closed;
Port ① pilot to shift,
Port ② to Port ③

- When the pressure at port ① exceed the setting pressure, there is a control pilot flow (0.16 - 0.25 L/min.)
- Maximum Leakage Approximately (15 cc/min./70 bar)

Z OPTIONS

L	Leakproof hex. socket screw.	
K	Handknob with Lock Knob. (Order Code: 6ZAK001)	
C	Stainless Steel Tamper Resistant Cover.	

Y	SPRINGS	
	ADJUSTMENT RANGES	
A	7 - 210 bar	(70 bar Standard Setting)
B	3.5 - 105 bar	(70 bar Standard Setting)
D	1.7 - 55 bar	(28 bar Standard Setting)
E	1.7 - 28 bar	(14 bar Standard Setting)
W	10.5 - 315 bar	(70 bar Standard Setting)