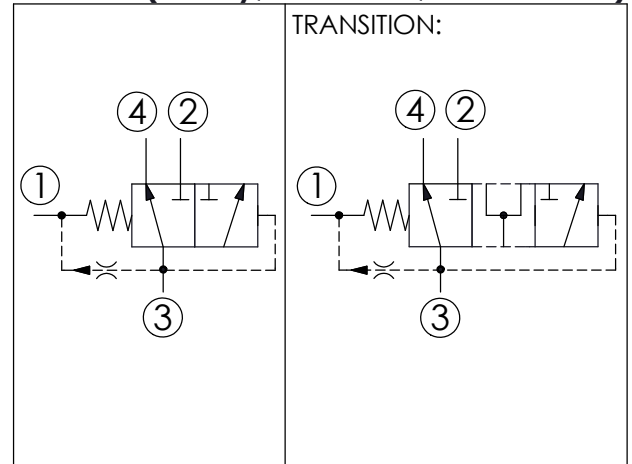
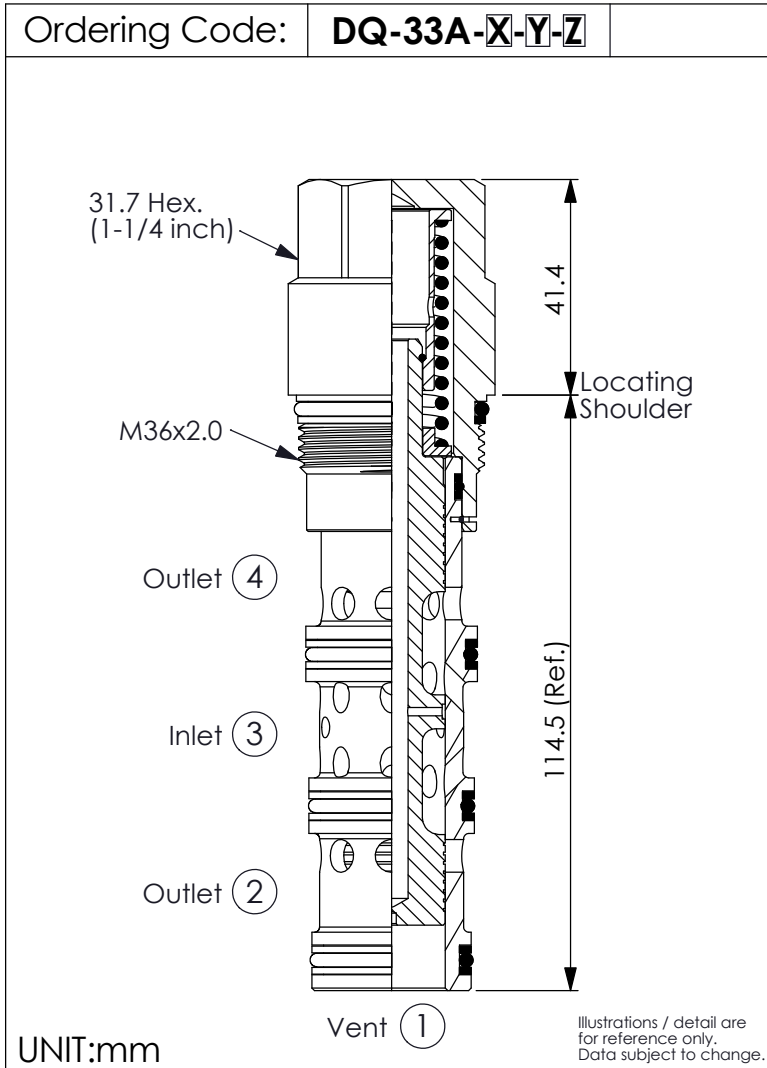
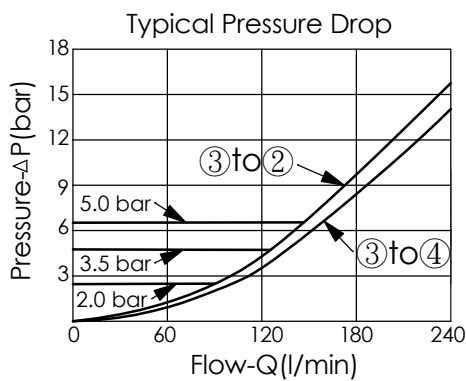


DIRECTIONAL VALVE (3-Way, 2-Position, Vent to Shift)



TECHNICAL DATA

Max. Operating pressure:	350	bar
Rated flow:	240	l/min
Cavity-Tooling:	33A-4	
Installation torque:	200 - 215	Nm
Weight:	0.73	kg
Nominal Vent Flow(0.6 l/min.)		



X OPERATION

41 Vent to shift
Normally Open Diverter

Z OPTIONS

N Non-adjustable

Y SPRINGS

Cracking pressure

20	2.0 bar
35	3.5 bar
50	5.0 bar