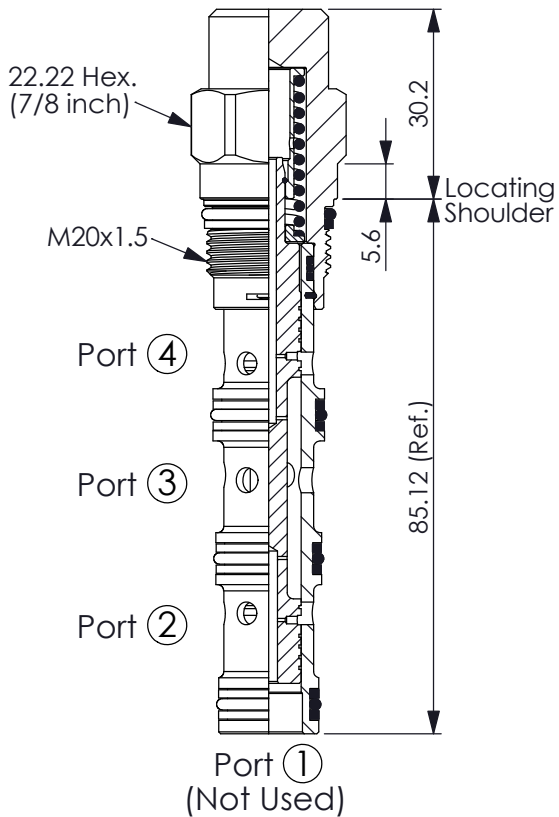


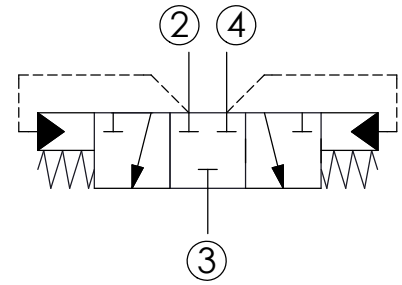
SHUTTLE VALVE (Low Side, 3-Position, Hot Oil Shuttle Valve)

Ordering Code: **DS-31A-X-Y-Z**

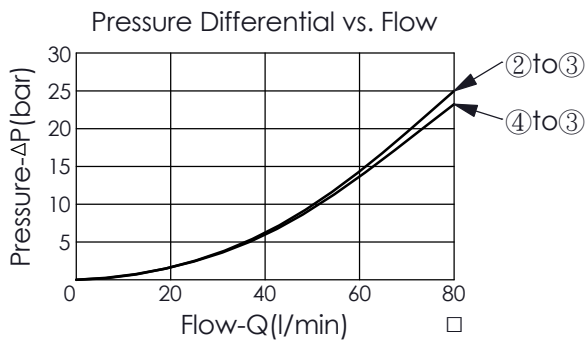
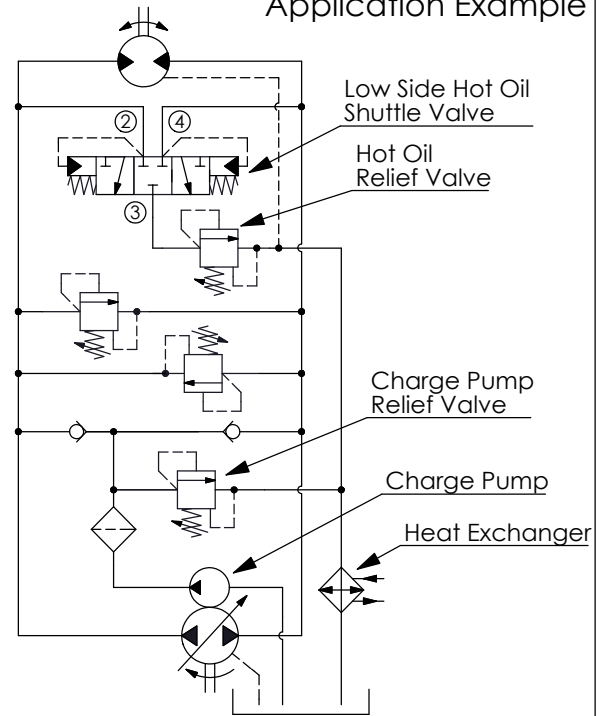


UNIT:mm

Illustrations / detail are for reference only. Data subject to change.



Application Example



TECHNICAL DATA

Max. pressure:	350	bar
Rated flow:	40	l/min
Cavity-Tooling:	31A-4	
Installation torque:	40 - 50	Nm
Weight:	0.17	kg

Y

SPRING

Shifting Pressure

50

5.0 bar

100

10.0 bar

140

14.0 bar

X

OPERATION

4L

4 Port (Port ① Not Used),
Low Side (Hot Oil)

· Pilot Flow (0.38 l/min.)

Z

OPTION

N

Non-adjustable