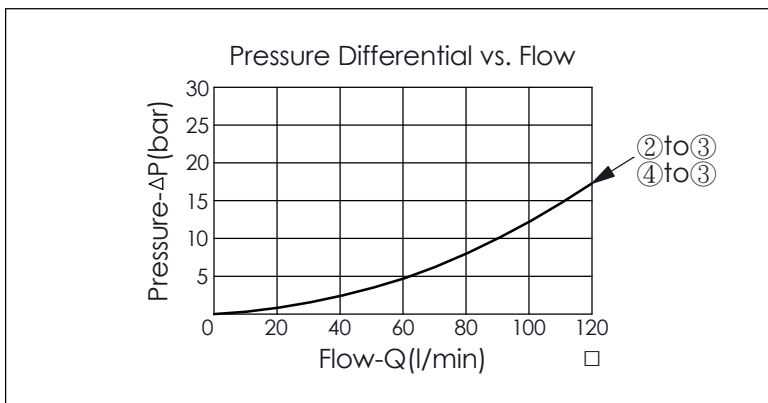
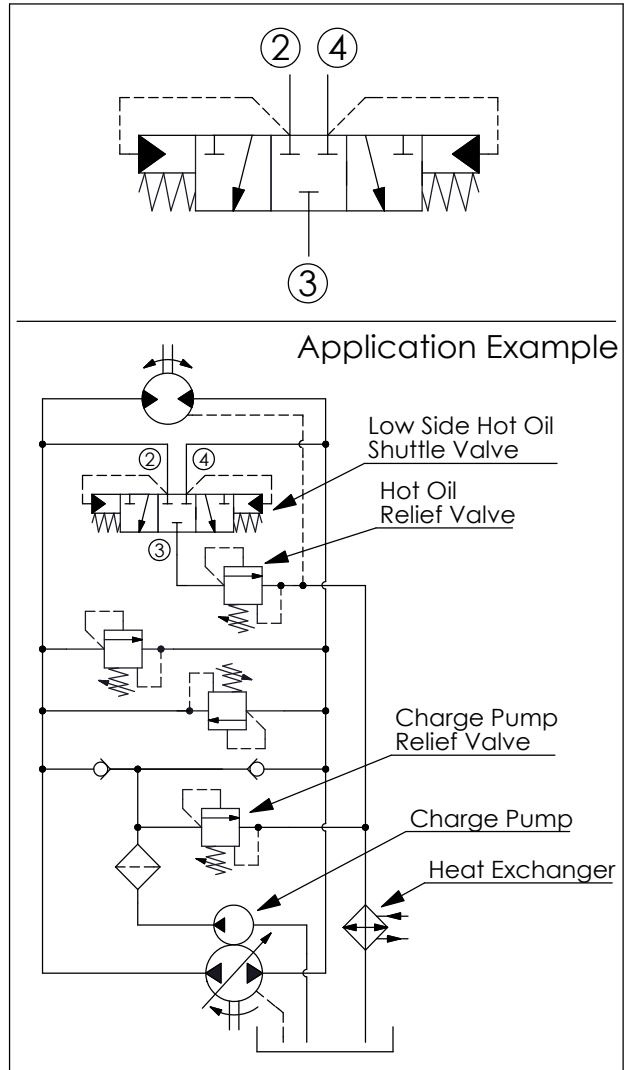
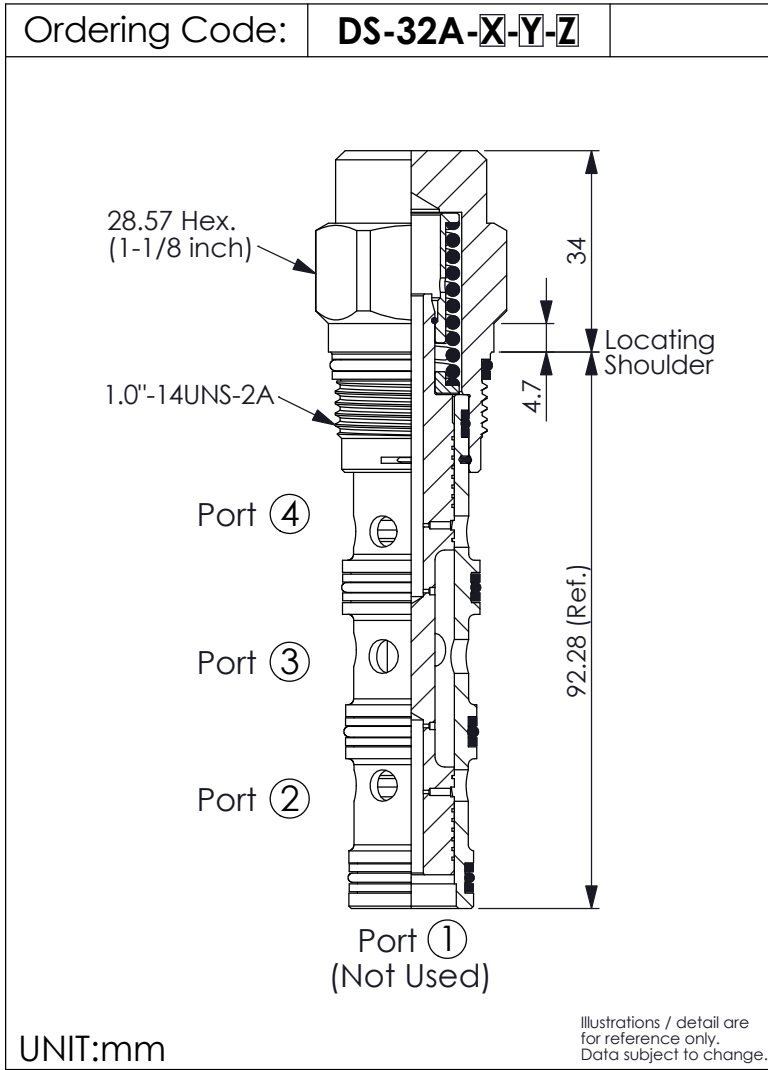


SHUTTLE VALVE (Low Side, 3-Position, Hot Oil Shuttle Valve)



TECHNICAL DATA		
Max. Operating pressure:	350 bar	
Rated flow:	80	l/min
Cavity-Tooling:	32A-4	
Installation torque:	60 - 70	Nm
Weight:	0.32	kg

Y	SPRING	
	Shifting Pressure	
35	3.5 bar	
50	5.0 bar	
100	10.0 bar	
140	14.0 bar	

X	OPERATION	
4L	4 Port (Port ① Not Used), Low Side (Hot Oil)	
	· Pilot Flow (0.38 l/min.)	

Z	OPTION	
N	Non-adjustable	