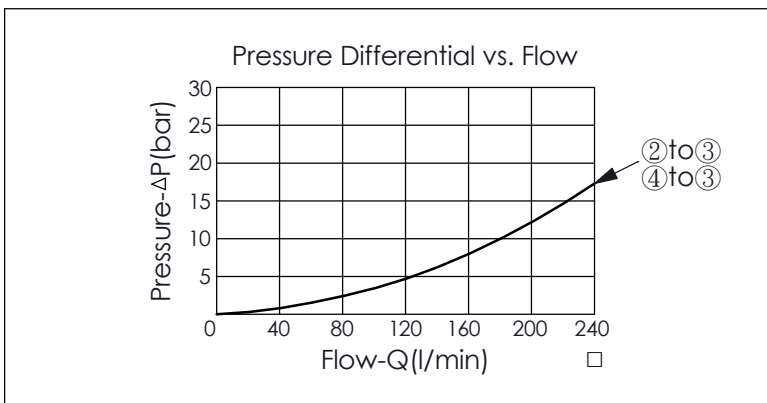
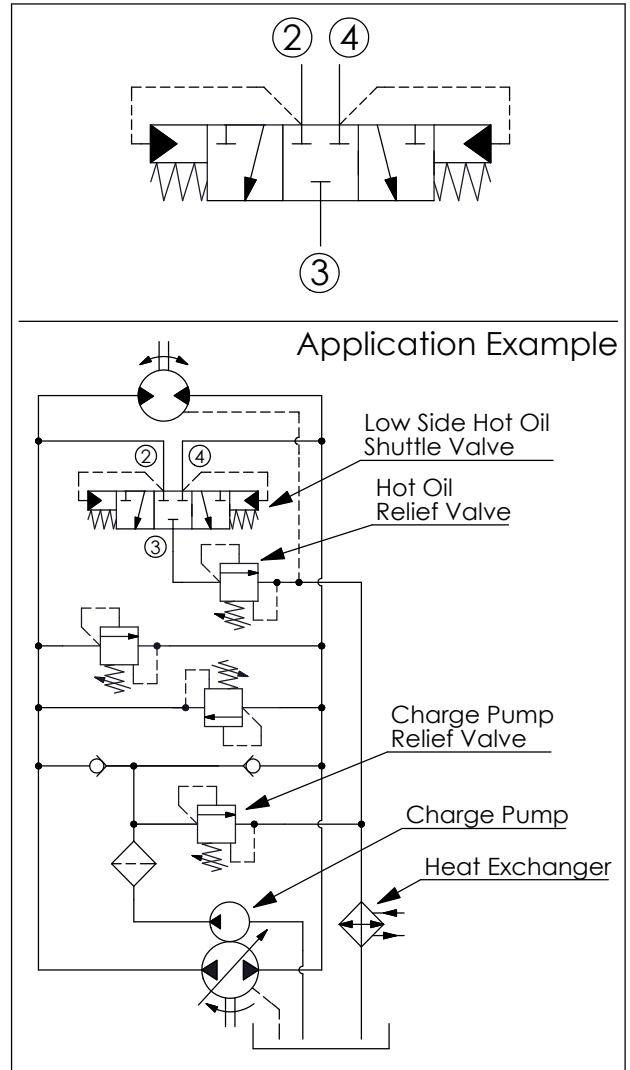
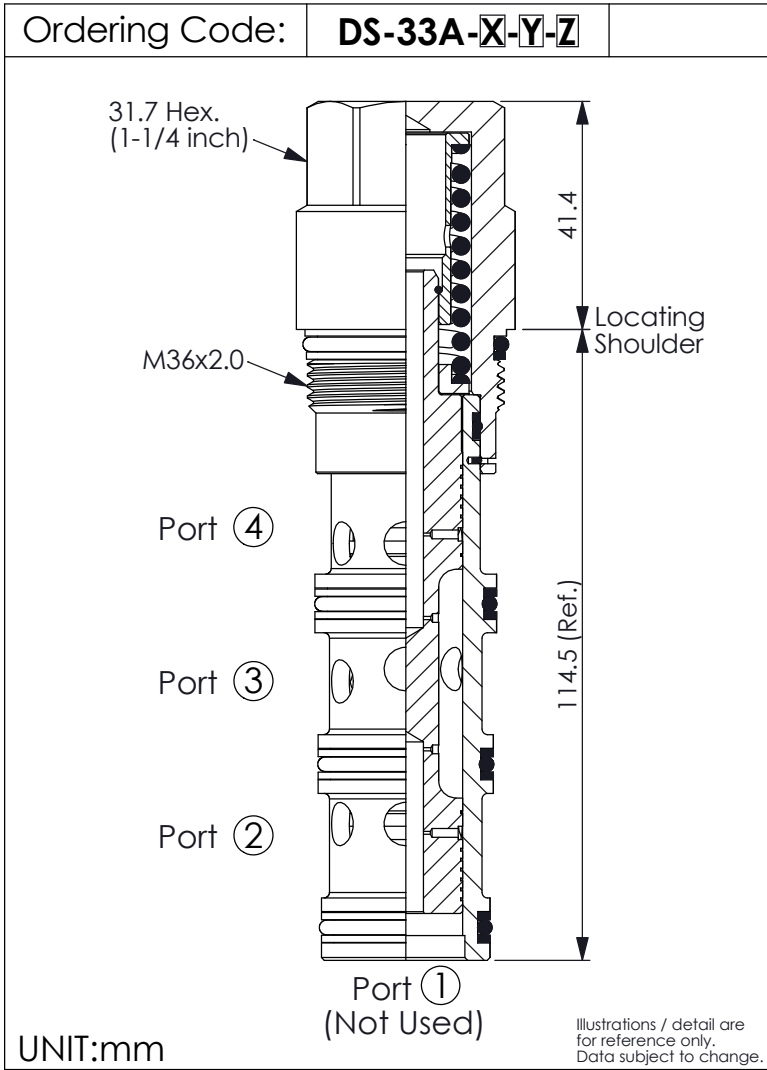


## SHUTTLE VALVE (Low Side, 3-Position, Hot Oil Shuttle Valve)



TECHNICAL DATA	
Max. Operating pressure:	350 bar
Rated flow:	160 l/min
Cavity-Tooling:	33A-4
Installation torque:	200 - 215 Nm
Weight:	0.75 kg

Y	SPRING	
	Shifting Pressure	
35	3.5 bar	
50	5.0 bar	
100	10.0 bar	
140	14.0 bar	

X	OPERATION	
4L	4 Port (Port ① Not Used), Low Side (Hot Oil)	
· Pilot Flow (0.75 l/min.)		

Z	OPTION	
N	Non-adjustable	