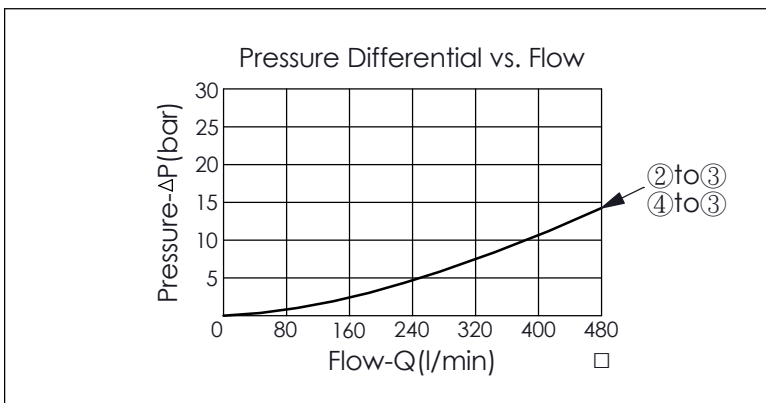
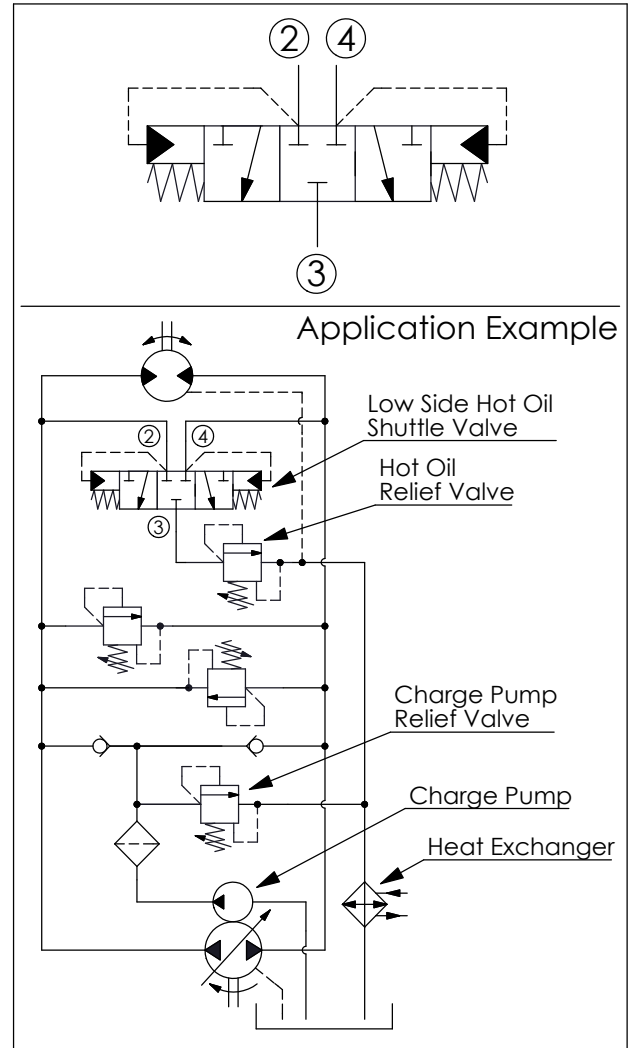
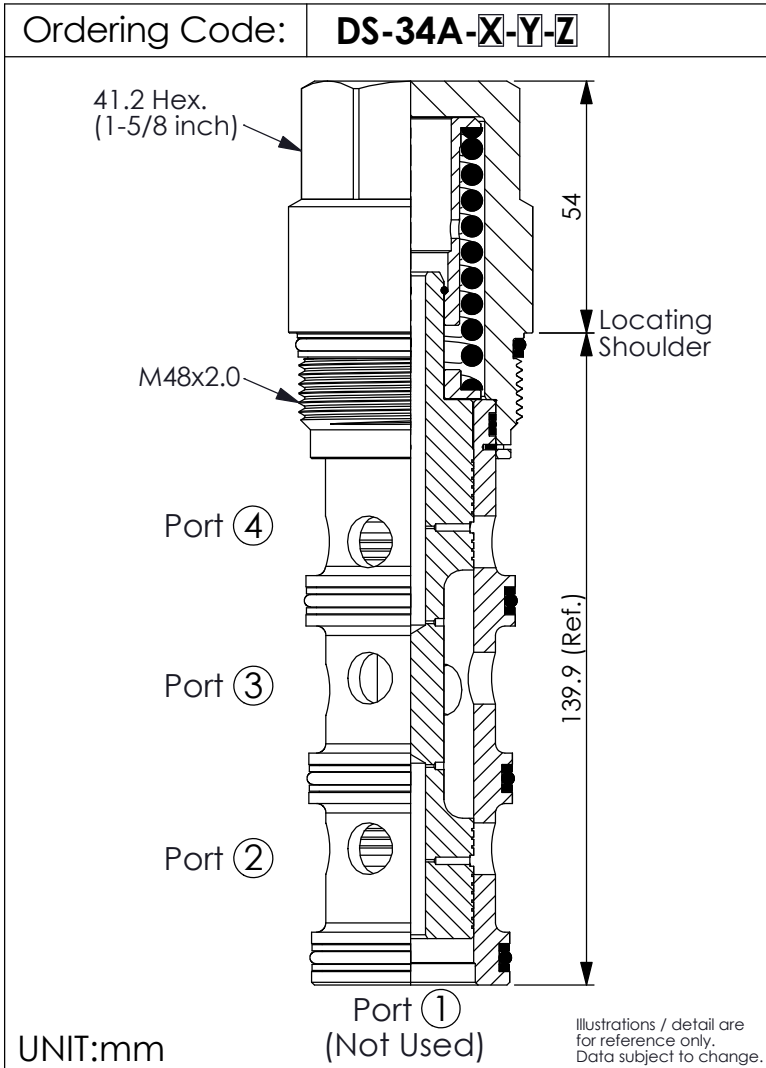


SHUTTLE VALVE (Low Side, 3-Position, Hot Oil Shuttle Valve)



TECHNICAL DATA	
Max. Operating pressure:	350 bar
Rated flow:	320 l/min
Cavity-Tooling:	34A-4
Installation torque:	465 - 500 Nm
Weight:	1.63 kg

Y	SPRING	
	Shifting Pressure	
50	5.0 bar	
100	10.0 bar	
140	14.0 bar	

X	OPERATION	
4L	4 Port (Port ① Not Used), Low Side (Hot Oil)	
	· Pilot Flow (0.75 l/min.)	

Z	OPTION	
N	Non-adjustable	