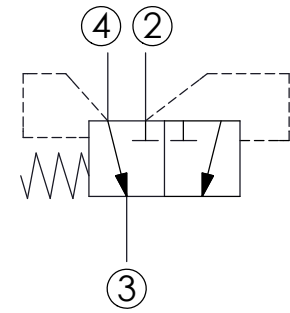
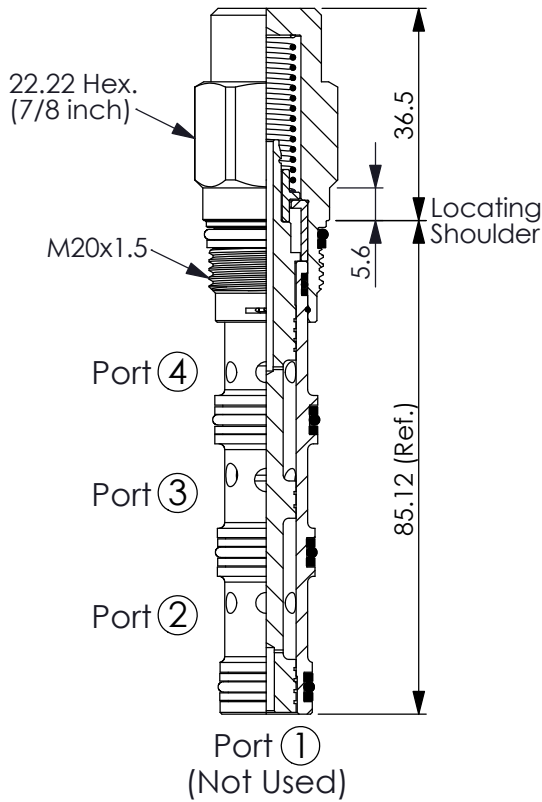


Ordering Code: **DS-31A-X-Y-Z**

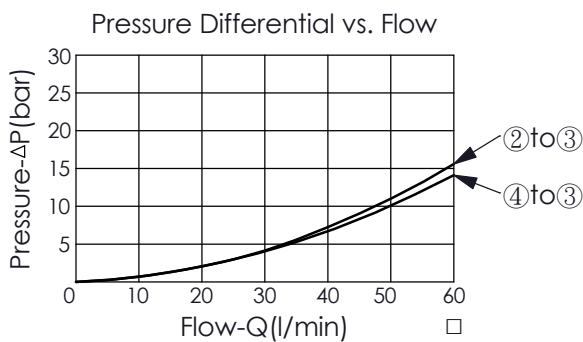


### TECHNICAL DATA

Max. pressure:	350	bar
Rated flow:	60	l/min
Cavity-Tooling:	31A-4	
Installation torque:	40 - 50	Nm
Weight:	0.18	kg

UNIT:mm

Illustrations / detail are for reference only. Data subject to change.



### X OPERATION

**4S** 4 Port (Port ① Not Used), High Side, Spring Offset

• Maximum Leakage Approximately (15 cc /min./70 bar)

**Y**

### SPRING

Shifting Pressure

**20**

2.0 bar

**50**

5.0 bar

**Z**

### OPTION

**N**

Non-adjustable