

## FILTER VALVE

(The flow path is Port ② to Port ① only)

Ordering Code: **FL-13A-X-Y-Z**

22.22 Hex. (7/8 inch)

M20x1.5

Inlet ②

Outlet ①

30.1

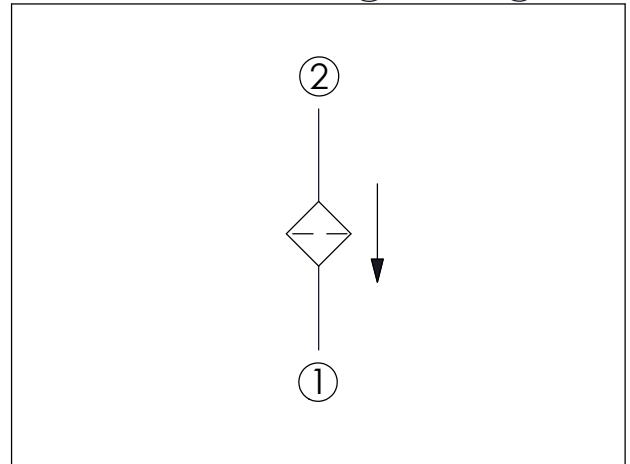
5.5

35.05 (Ref.)

Locating Shoulder

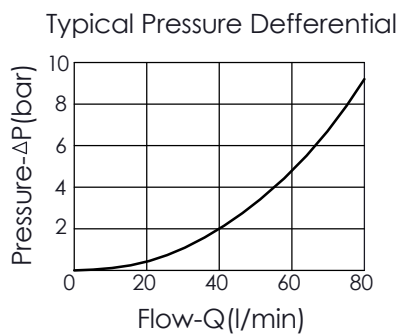
UNIT:mm

Illustrations / detail are for reference only. Data subject to change.



### TECHNICAL DATA

Max. pressure:	350	bar
Rated flow:	40	l/min
Cavity-Tooling:	13A-2	
Installation torque:	40 - 50	Nm
Weight:	0.10	kg



### X OPERATION

**20** Standard Type

Differential crush pressure is 210 bar.

### Y FILTER RATING

**D** 40 Micron Nominal(Surface type)

### Z OPTION

**N** Non-adjustable

**NP** Non-adjustable  
With stainless steel  
external metal components  
(Buna-N Seal)