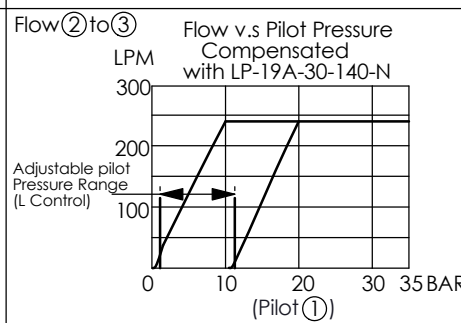
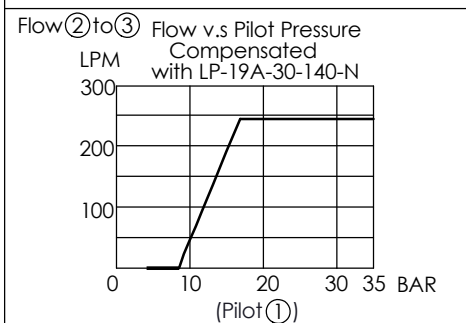
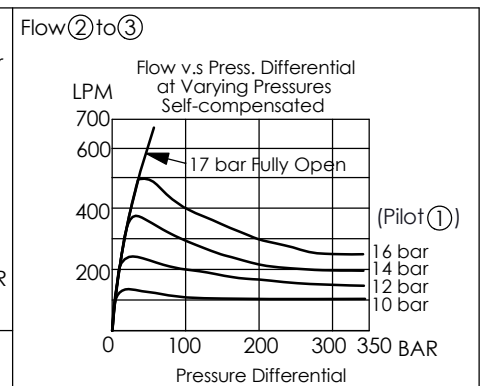
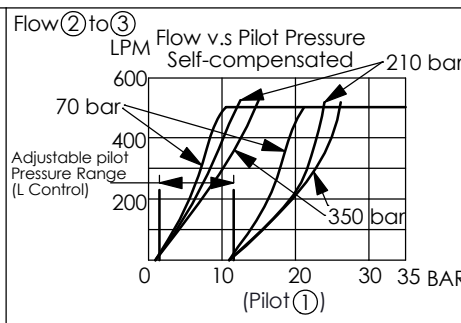
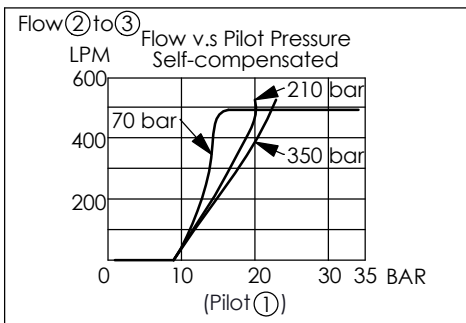


#### TECHNICAL DATA

Max. Operating pressure:	350 bar
Rated flow:	240 l/min
Cavity-Tooling:	24A-4 (24AB-4)
Installation torque:	465 - 500 Nm
Weight:	1.51 kg
Ports ① and ④ should be limited to 35 bar	



<b>X</b>	<b>OPERATION</b>		
<b>4C</b>	4 Port, Normally Closed		
<b>Y</b>	<b>MAX. FLOW</b>	<b>MIN. PILOT PRESSURE</b>	
<b>B</b>	240 LPM	10 bar	

<b>Z</b>	<b>OPTIONS</b>		
<b>L</b>	Leakproof hex. socket screw. (The adjustment range is 1.4-13 bar) (7 bar Standard Setting)		
<b>N</b>	Non-adjustable (Minimum Pilot Pressure to Operate 10 bar)		