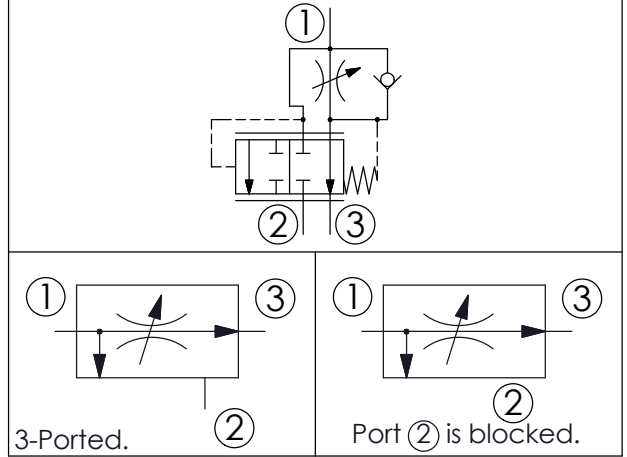
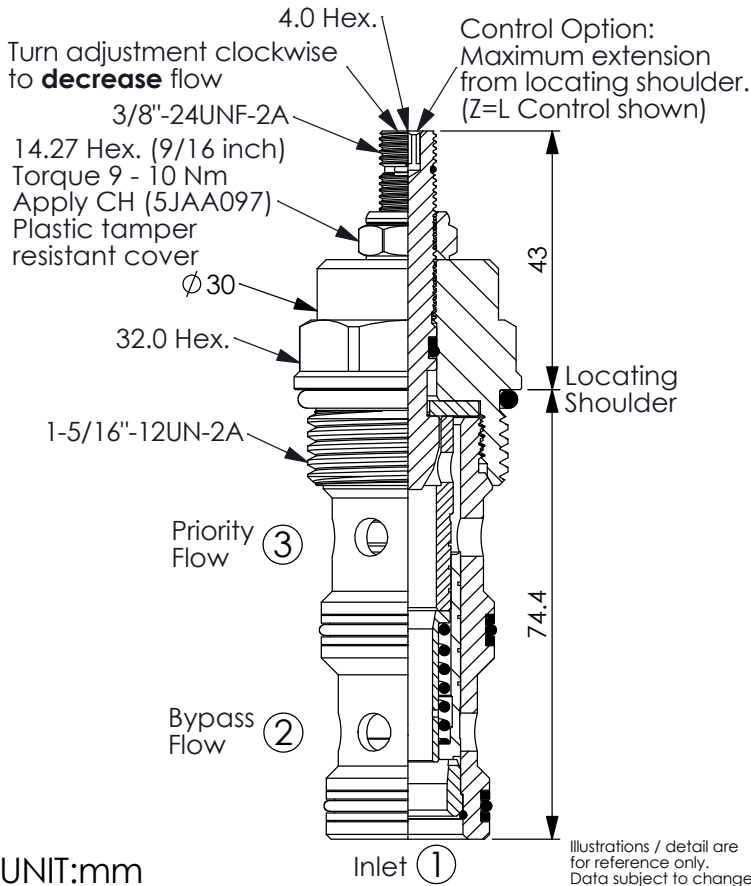


Ordering Code: **FR-16W-X-Y-Z**



TECHNICAL DATA

Max. Operating pressure: 240 bar

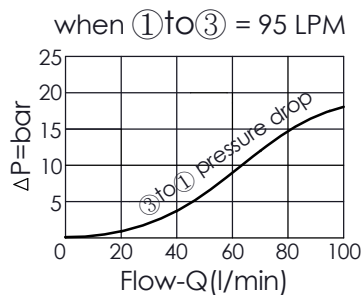
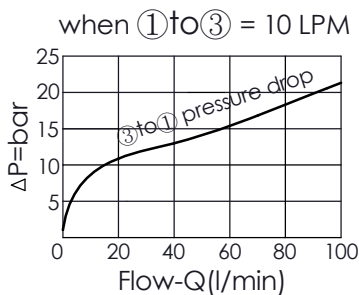
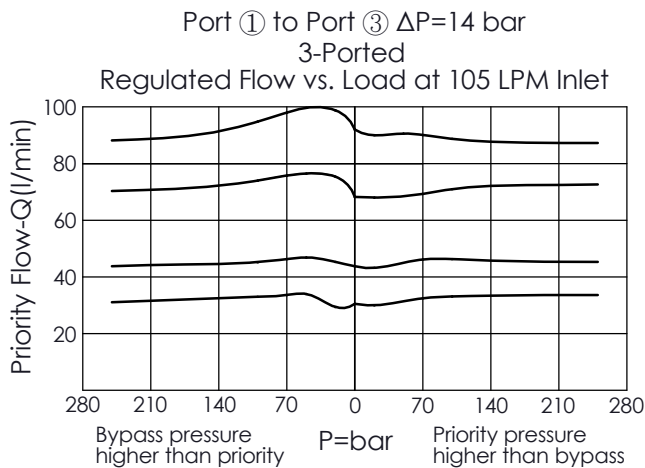
Inlet flow at port ①: 105 LPM nominal
157 LPM max.

Cavity-Tooling: 16W-3

Installation torque: 60 - 70 Nm

Weight: 0.422 kg

Note: It can be used as a priority-type flow regulator or a restrictive-type 2-way flow regulator when the bypass port (port ②) is blocked.



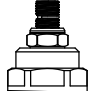
X PRIORITY FLOW RANGE

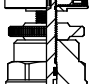
39 Flow Rate :
3-ported regulated flow 95 LPM

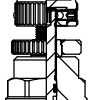
Y SPRING RANGE

N Standard, $\Delta P=14$ bar
(Priority Flow 1 - 95 LPM fully adjustable)

Z OPTIONS

L Leakproof hex. socket screw. 

B Handknob and aluminum locknut. 

K Handknob with Lock Knob.
(Order Code: 6ZAK001) 

T Three-winged Handknob Kit. 