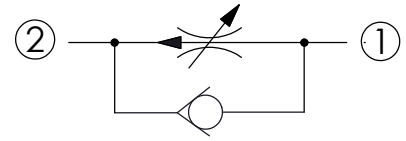
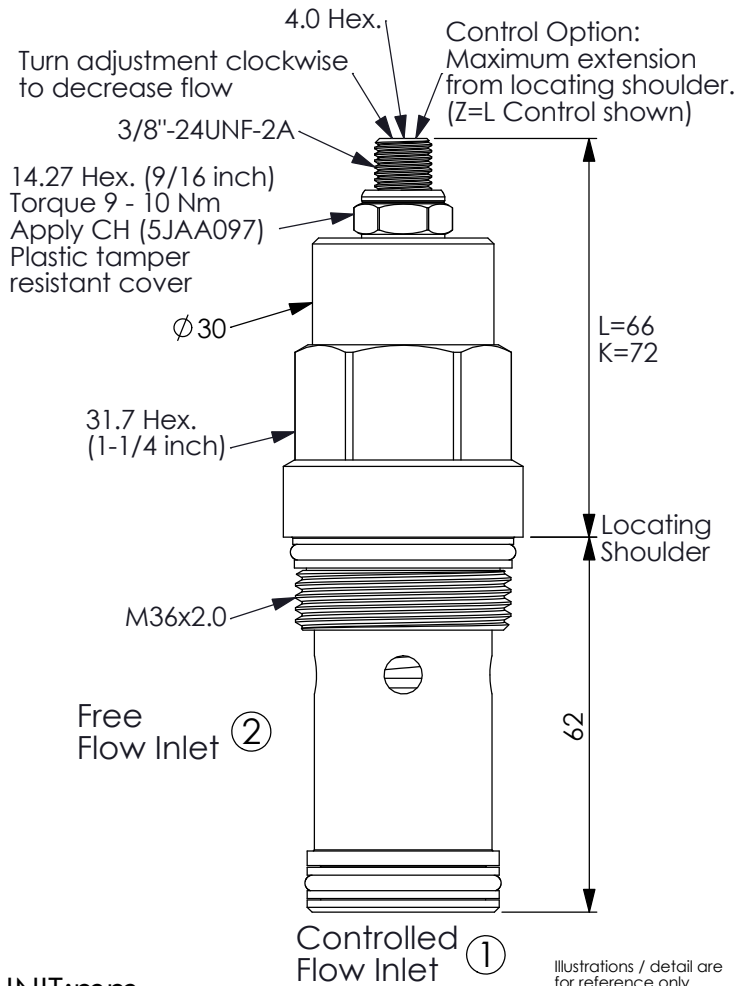


FLOW CONTROL VALVE

(Fully Adjustable Pressure Compensated Flow Control Valve with Reverse Flow Check and Sharp-Edge Orifice)

Ordering Code: **FR-16A-X-Y-Z**



TECHNICAL DATA

Max. Operating pressure: 350 bar

Rated flow: 95 l/min

Cavity-Tooling: 16A-2

Installation torque: 200 - 215 Nm

Weight: 0.52 kg

Accurate pressure compensated control requires that a 200 psi (14 bar) minimum pressure differential be maintained across the valve.

X OPERATION

20 Standard Type

Y FLOW SETTING

A 0.8 - 95 LPM

B 0.8 - 60 LPM

Z OPTIONS

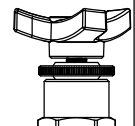
L Leakproof hex. socket screw.



LP Leakproof hex. socket screw. With Stainless Steel External Components



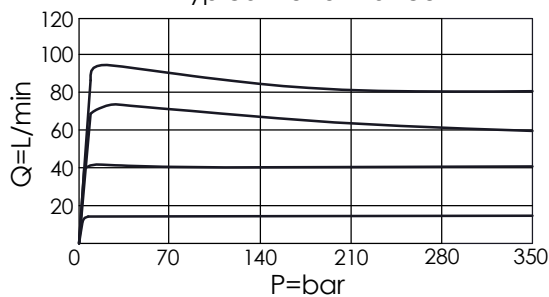
T Three-winged Handknob Kit.



K Handknob with Lock Knob. (Order Code: 6ZAK001)



Typical Performance



Reverse Free Flow with Needle Closed

