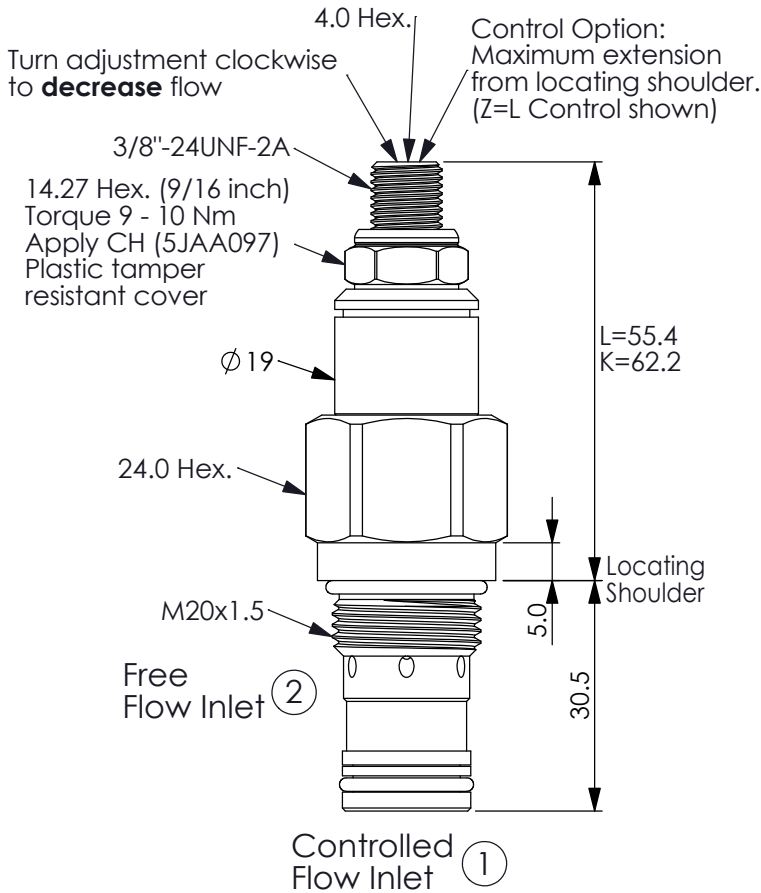
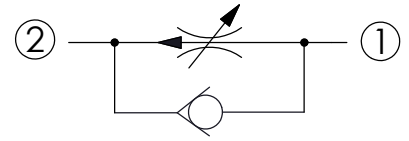


Ordering Code: **FR-20MC-X-Y-Z**



UNIT:mm

Illustrations / detail are for reference only. Data subject to change.



TECHNICAL DATA

Max. Operating pressure: 350 bar

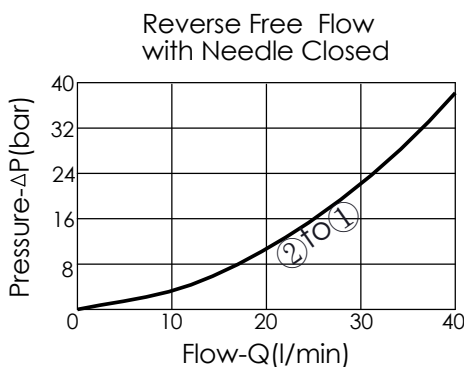
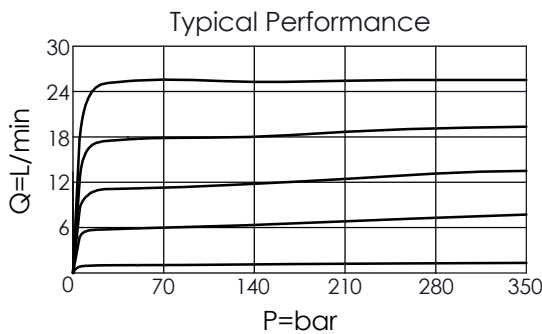
Rated flow: 23 l/min

Cavity-Tooling: 20MC-2

Installation torque: 40 - 50 Nm

Weight: 0.13 kg

Accurate pressure compensated control requires that a 200 psi (14 bar) minimum pressure differential be maintained across the valve.



X	OPERATION	
20	Standard Type	

Y	FLOW SETTING	
A	0.4 - 23 LPM	
C	0.4 - 4 LPM	

Z	OPTIONS	
L	Leakproof hex. socket screw.	
K	Handknob with Lock Knob. (Order Code: 6ZAK001)	
T	Three-winged Handknob Kit.	