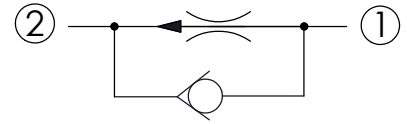
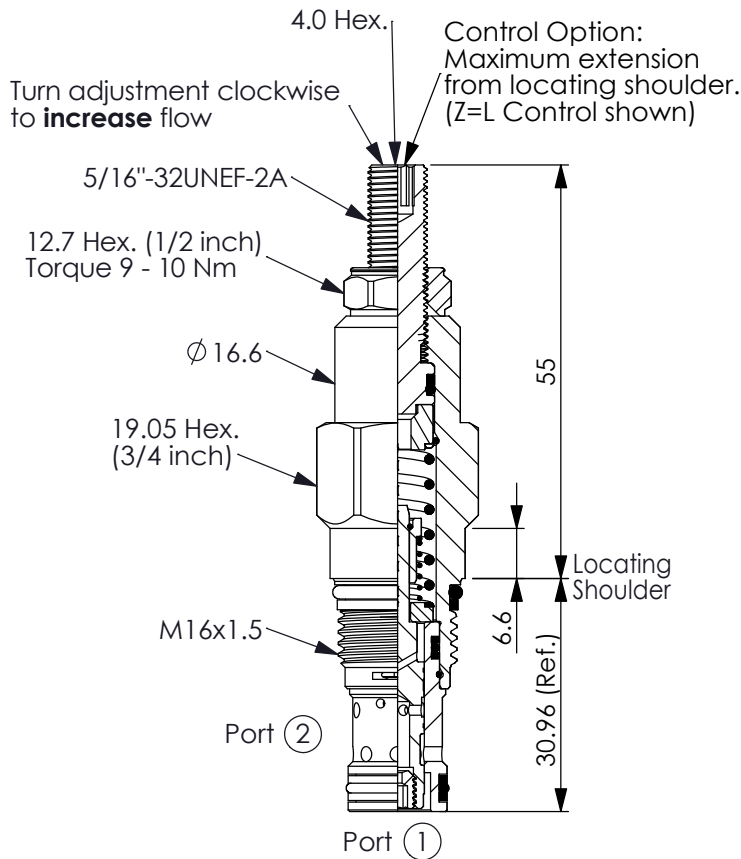


Ordering Code: **FR-162A-X-Y-Z**



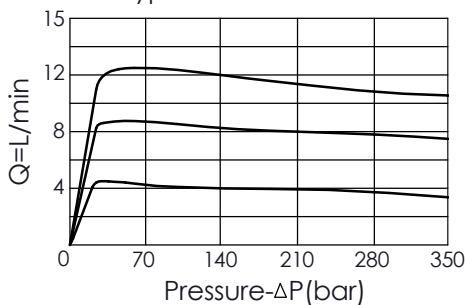
TECHNICAL DATA

Max. Operating pressure:	350	bar
Rated flow:	0.4 - 11	l/min
Cavity-Tooling:	162A-2	
Installation torque:	27 - 33	Nm
Weight:	0.10	kg

UNIT:mm

Illustrations / detail are for reference only. Data subject to change.

Typical Performance



X OPERATION

2C Fixed Setting, with Reverse Flow Check

Y FLOW SETTING

0300	3.0 LPM
0400	4.0 LPM
0600	6.0 LPM
0800	8.0 LPM
1000	10.0 LPM

- Factory set flow ratings are within $\pm 15\%$ of the requested setting
- Customer must specify a flow rating
- If you need specific flow accuracy, please contact WINNER's sales department

Z OPTIONS

L Leakproof hex. socket screw. (Adjustment Ranges Approx. $\pm 20\%$)



K Handknob with Lock Knob. (Order Code: 7ZAK001)

