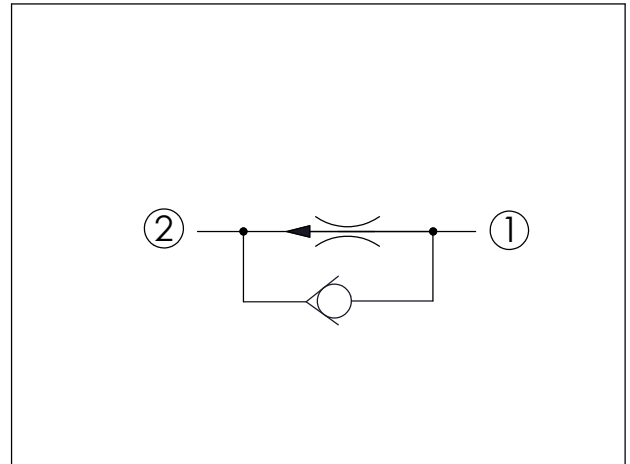
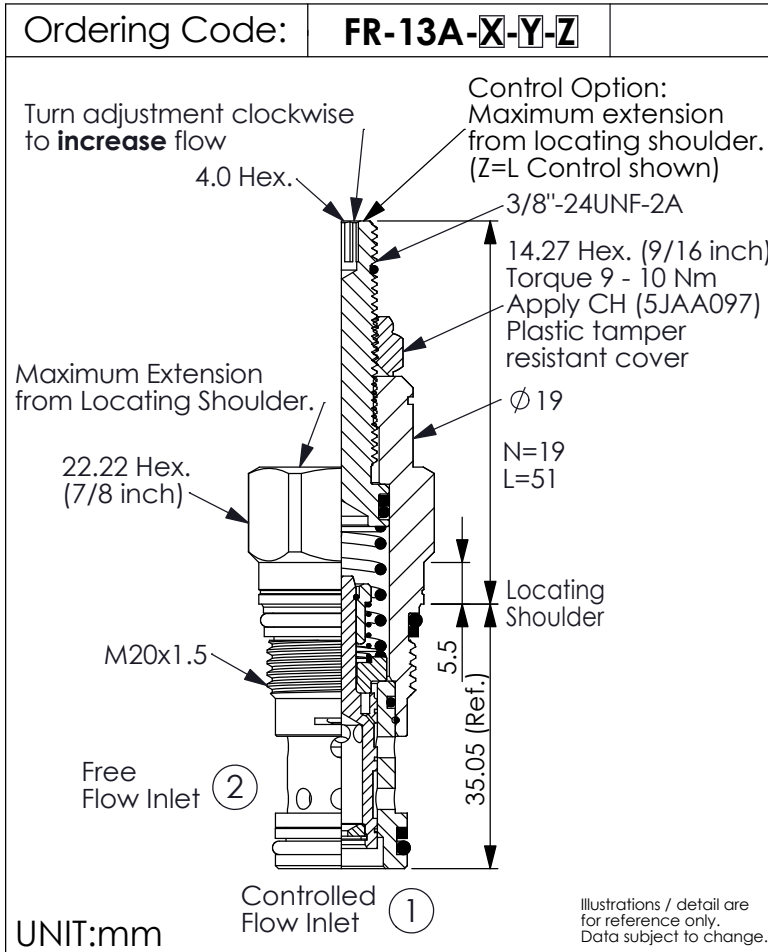
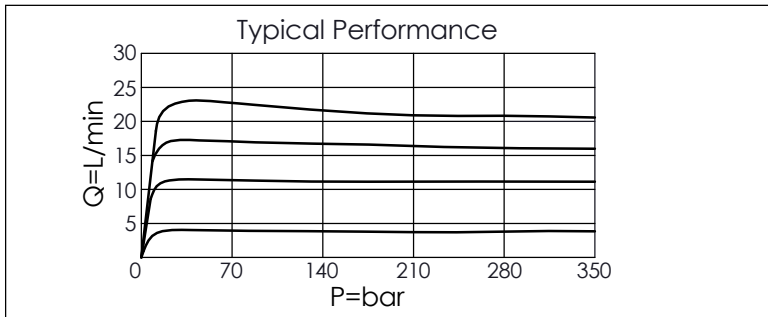


FLOW CONTROL VALVE (Fixed Orifice, Pressure Compensated, with Reverse Flow Check)



TECHNICAL DATA

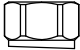

Max. Operating pressure:	350 bar
Rated flow:	0.4 - 23 l/min
Cavity-Tooling:	13A-2
Installation torque:	40 - 50 Nm
Weight:	0.10 (Z=N) 0.14 (Z=L) kg



Y	FLOW SETTING
0150	1.5 LPM
0200	2.0 LPM
0240	2.4 LPM
0400	4.0 LPM
1000	10.0 LPM
1300	13.0 LPM
1500	15.0 LPM
1800	18.0 LPM
2300	23.0 LPM

- Factory set flow ratings are within $\pm 10\%$ of the requested setting
- Customer must specify a flow rating
- If you need specific flow accuracy, please contact WINNER's sales department

X	OPERATION
2C	Fixed Setting, with Reverse Flow Check

Z	OPTIONS
N	Non-adjustable 
L	Leakproof hex. socket screw. (Adjustment Ranges Approx. $\pm 25\%$) 
K	Handknob with Lock Knob. (Order Code: 6ZAK001) 