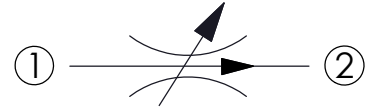
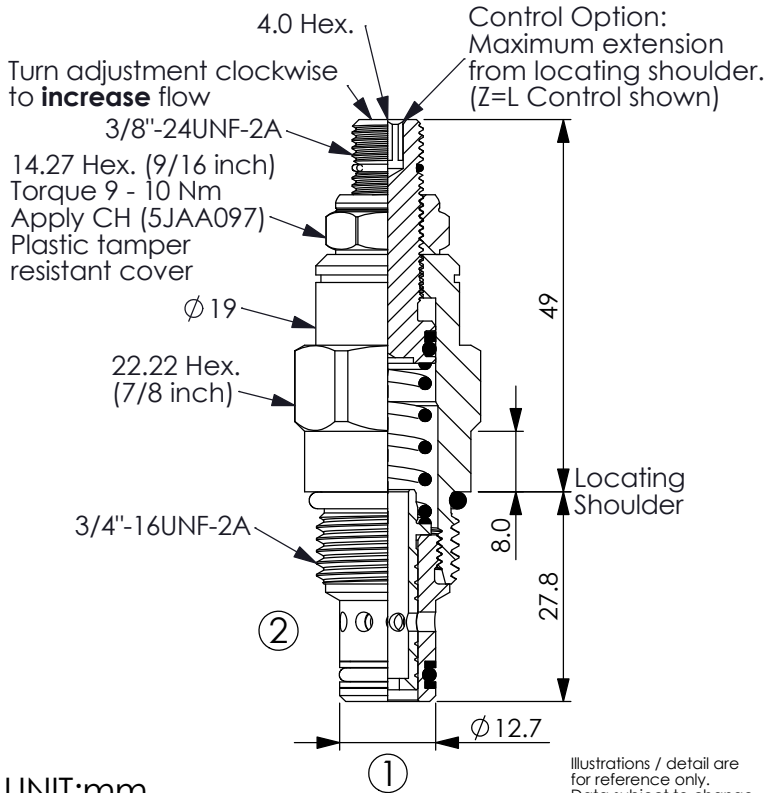
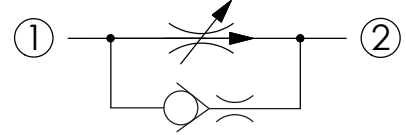


FLOW CONTROL VALVE (Fixed Orifice, Pressure Compensated)

Ordering Code: **FR-08W-X-Y-Z**



Refer To Performance Chart:



TECHNICAL DATA

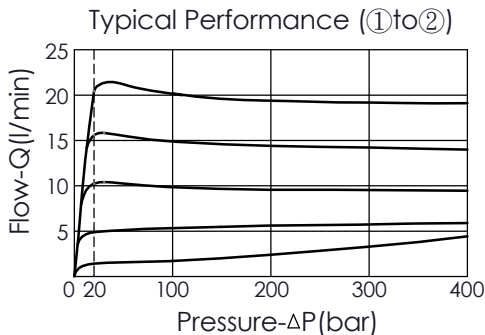
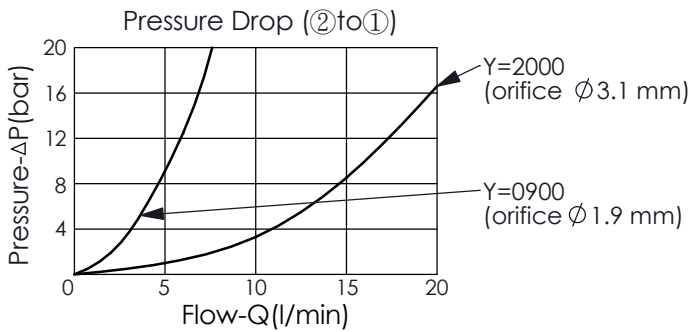
Max. Operating pressure: 350 bar
(Refer To Performance Chart)

Rated Flow: 20 l/min
(Refer To Performance Chart)

Cavity-Tooling: 08W-2

Installation torque: 25 - 35 Nm

Weight: 0.109 (Z=L) kg



X OPERATION

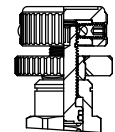
22 port ① to port ②
pressure compensated ;
port ② to port ①
fixed orifice

Z OPTION

L Leakproof hex. socket screw.



K Handknob with Lock Knob.
(Order Code: 6ZAK001)



Y FLOW SETTING

2000 1 - 20 LPM (10 LPM standard setting)

0900 1 - 9 LPM (4 LPM standard setting)

- Full adjustment from 1 - 20 LPM (port ① to port ② Pressure Compensated)
- If different factory set flow ratings are required, please feel free to contact us.