

## FLOW CONTROL VALVE (Fixed Orifice, Pressure Compensated)

Ordering Code: **FR-10W-X-Y-Z**

4.0 Hex.  
Turn adjustment clockwise to **increase** flow

Control Option:  
Maximum extension from locating shoulder.  
(Z=L Control shown)

3/8"-24UNF-2A

14.27 Hex. (9/16 inch)  
Torque 9 - 10 Nm  
Apply CH (5JAA097)  
Plastic tamper resistant cover

Ø19

25.4 Hex. (1.0 inch)

7/8"-14UNF-2A

61

7.8

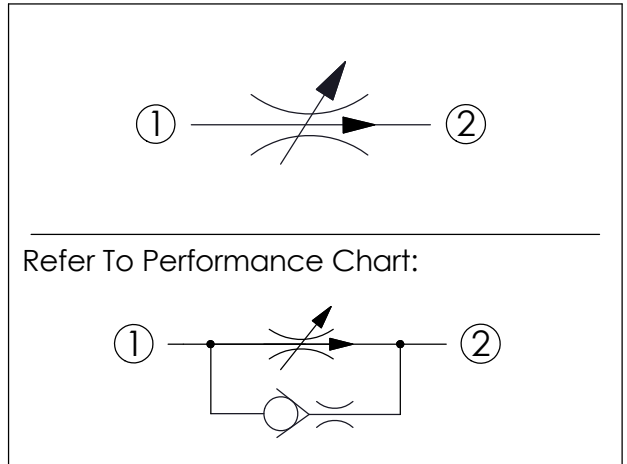
32.3

Locating Shoulder

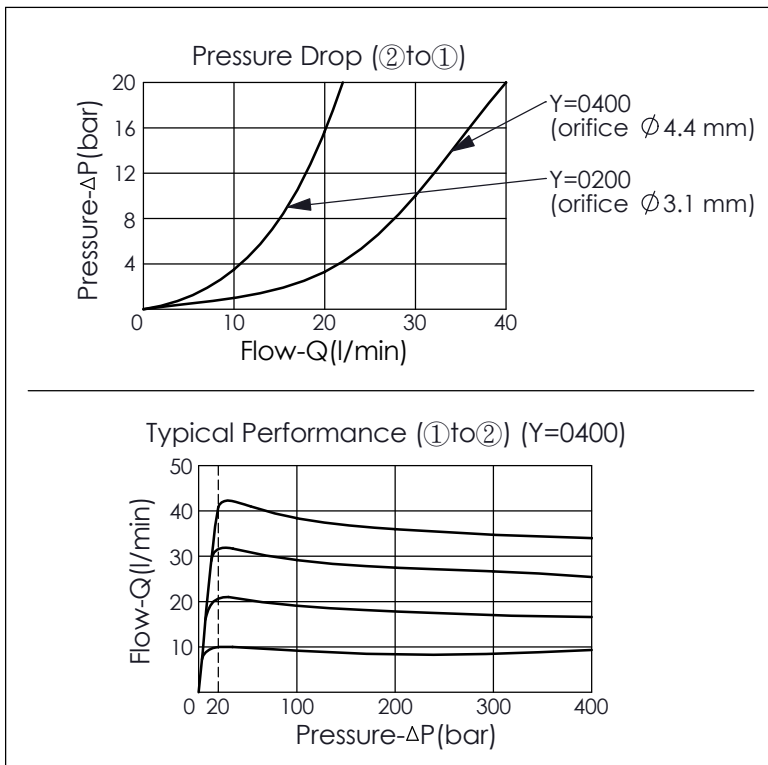
Ø15.87

UNIT:mm

Illustrations / detail are for reference only. Data subject to change.



TECHNICAL DATA	
Max. Operating pressure:	350 bar (Refer To Performance Chart)
Rated Flow:	40 l/min (Refer To Performance Chart)
Cavity-Tooling:	10W-2
Installation torque:	35 - 45 Nm
Weight:	0.184 (Z=L) kg



X	OPERATION	
22	port ① to port ② pressure compensated ; port ② to port ① fixed orifice	

Z	OPTION	
L	Leakproof hex. socket screw.	
K	Handknob with Lock Knob. (Order Code: 6ZAK001)	

Y	FLOW SETTING	
0400	1 - 40 LPM (20 LPM standard setting)	
0200	1 - 20 LPM (10 LPM standard setting)	

• Full adjustment from 1 - 40 LPM (port ① to port ② Pressure Compensated)  
• If different factory set flow ratings are required, please feel free to contact us.